

Parts List

8106.181 Matador



Table of Contents

Introduction	2
Specially approved products.....	2
Product Description	3
The data plate.....	3
Parts	4
Exploded view.....	4
List of parts.....	5

Introduction

Purpose of this manual

The purpose of this manual is to provide necessary information on spare parts and accessories order.

Disclaimer

Always use genuine Grindex parts. The use of other spare parts or accessories can invalidate any claims for warranty or compensation. Grindex does not take any responsibility for damages that are caused by the use of non-original parts. For more information, contact your local sales and service representative.

Data for ordering spare parts

The following information is needed for spare part orders:

- Serial number of the product
- Part number
- Quantity of bulk material, see * in tables

Specially approved products

Qualification of personnel

Only Grindex or Grindex-authorized service personnel may undertake repair work on Ex-approved products.

Dimensional accuracy inspection

Spare parts marked with (Ex) after the part number are subject to dimensional accuracy inspection.

Product Description

Products included

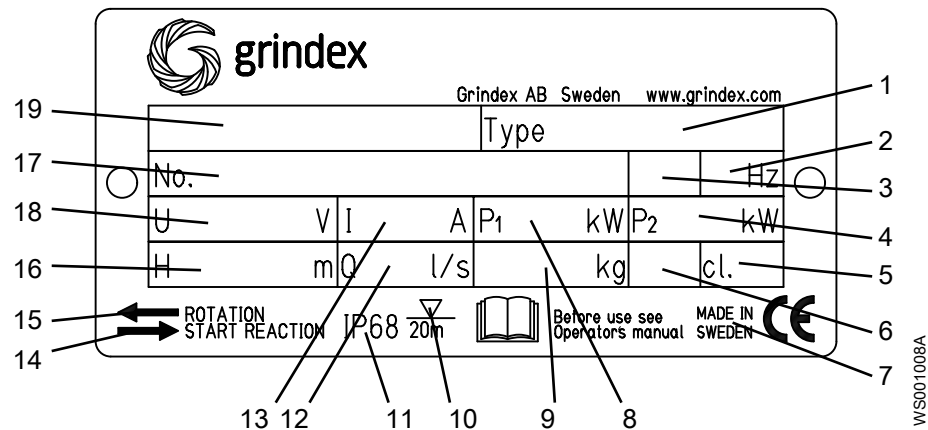
Pump model	Approvals
Matador 8106.181	Standard

The data plate

Introduction

The data plate is a metal label located on the main body of the pump. The data plate lists key product specifications.

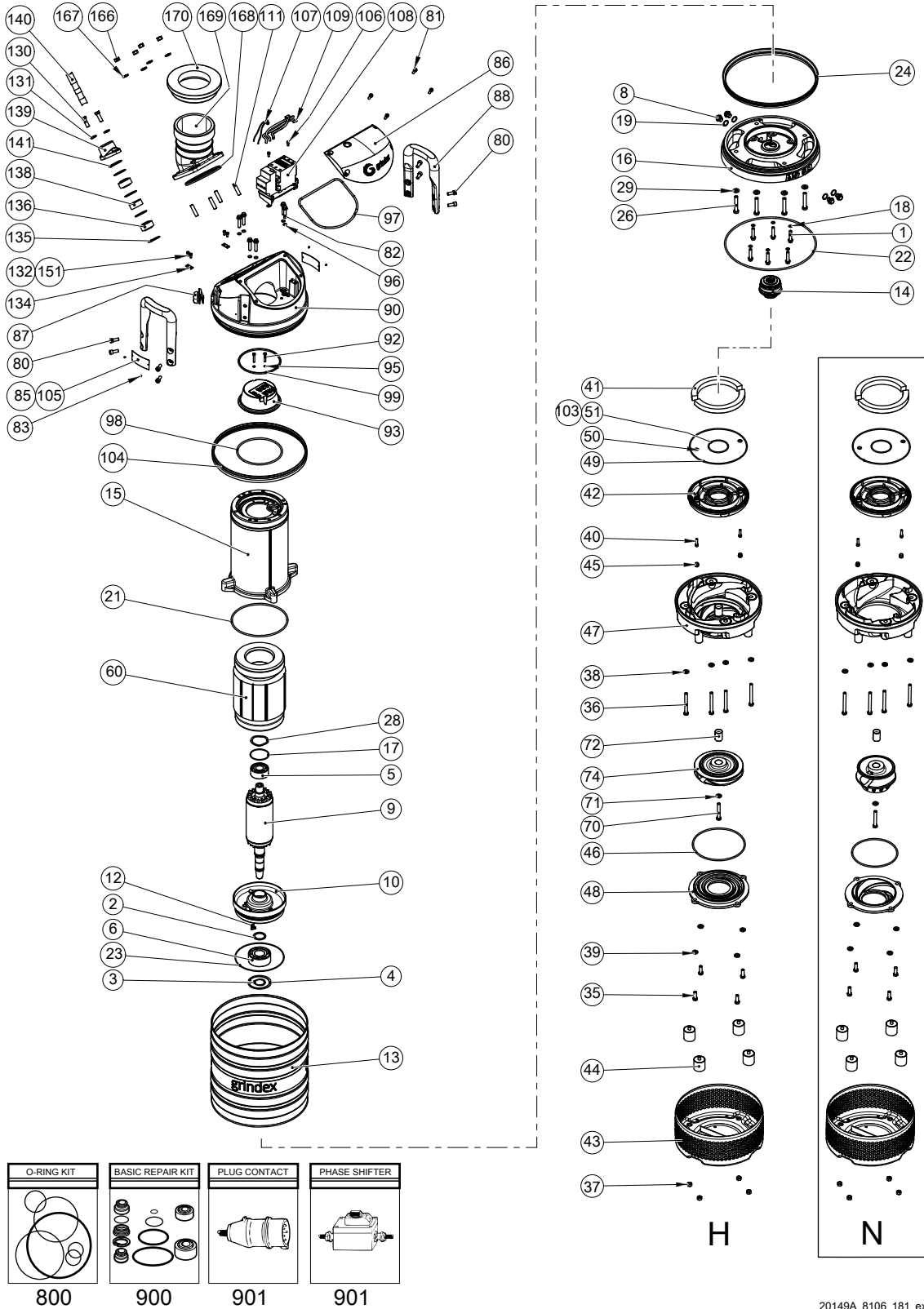
The data plate



1. Pump type number
2. Frequency
3. Phases, type of current
4. Rated shaft power
5. Thermal class
6. Locked rotor code-letter
7. Country of origin
8. Maximum power consumption
9. Product weight
10. Maximum submersion depth
11. Degree of protection
12. Maximum capacity
13. Rated current
14. Direction of the start reaction
15. Direction of the impeller rotation
16. Maximum head
17. Serial number
18. Rated voltage
19. Pump model

Parts

Exploded view



20149A_8106_181_expl_view

List of parts

Table 1: 8106

Pos. No	Part. No	Denomination	Qty/Version
			181
1	410 076	Hexagon flange screw M10X45-A2-70	6
2	410 079	Supporting washer 40X50X2.5-SPRING STEEL	1
3	410 081	Retaining ring SGA 40	1
4	410 093	Retaining ring JB 90	1
5	410 100	Ball bearing 30X72X30.2 MM	1
6	410 101	Ball bearing 40X90X36.5 MM	1
7	410 053	Oil ISO VG 32	*
8	133 063	Inspection screw	4
9	51 029 03	Shaft unit	1
10	51 032 00	Bearing holder	1
12	51 041 00	Hexagon head screw	1
13	50 867 00	Cooling jacket	1
14	51 745 51	Mechanical seal	1
15	51 740 00	Stator housing	1
16	51 741 00	Adapter	1
17	410 084	O-ring 71.2X3 FPM	1
18	50 037 34	O-ring 10.3X2.4 NBR	6
19	410 487	O-ring 19.2X3 FPM	4
21	132 422	O-ring 219.3X5.7 NBR	1
22	50 037 31	O-ring 359.3X5.7 NBR	1
23	410 022	O-ring 175X3 NBR	1
24	51 059 00	Seal ring	1
25	50 136 00	Instruction label	1
26	410 198	Hexagon head screw M12X70-A2-70	4
28	410 080	Spring washer 71.5X59X0.55 MM	1
29	132 424	Plain washer 12-A2-170	4
35	410 197	Hexagon head screw M12X35-A2-70	4
36	410 075	Hexagon head screw M12X110-A2-70	4
37	410 011	Hexagon nut M12-A4-70	4
38	132 424	Plain washer 12-A2-170	4
39	132 424	Plain washer 12-A2-170	4

Pos. No	Part. No	Denomination	Qty/Version
			181
40	50 021 18	Hex.socket hd screw M8X30-A4-70	2
41	410 106	Pressure equalizer L=310 MM	2
42	51 043 00	Seal housing cov.coa	1
43	51 044 01	Strainer	1
44	51 045 00	Damper complete	4
45	133 060	Protective plug	2
46	132 314	O-ring 189.3X5.7 NBR	N Mtrl: NBR 1
46	132 422	O-ring 219.3X5.7 NBR	H Mtrl: NBR 1
47	51 019 00	Diffuser coat.	N Mtrl: NBR 1
47	51 018 00	Diffuser coat.	H Mtrl: NBR 1
48	51 042 00	Suction cover	N Mtrl: NBR 1
48	51 040 00	Suction cover	H Mtrl: NBR 1
49	410 900	O-ring 246.0X4.0 FPM	1
50	410 096	O-ring 11.6X2.9 FPM	2
51	410 097	O-ring 84.4X4 FPM	1
60	51 007 08	Stator 21-18-2b	Stator 3-phase 60Hz 200V-208V D Max ambient temp=70 DC . Stator 3- phase 60Hz 200V-208V D Max ambient temp=40 DC 1
60	51 007 02	Stator 21-18-2b	Stator 3-phase 50Hz 220V-240V D Max ambient temp=40 DC . Stator 3- phase 50Hz 220V-240V D Max ambient temp=70 DC 1
60	51 007 06	Stator 21-18-2b	Stator 3-phase 60Hz 220V-240V D Max ambient temp=70 DC . Stator 3- phase 60Hz 220V-240V D Max ambient temp=40 DC 1
60	51 007 04	Stator 21-18-2b	Stator 3-phase 60Hz 220V-240V Y// Max ambient temp=70 DC . Stator 3-phase 60Hz 220V-240V Y// Max ambient temp=40 DC 1
60	51 007 11	Stator 21-18-2b	Stator 3-phase 60Hz 220V-230V D// Max ambient temp=70 DC . Stator 3-phase 60Hz 220V-230V D// Max ambient temp=40 DC 1

Pos. No	Part. No	Denomination	Qty/Version
			181
60	51 007 07	Stator 21-18-2b	1
		Stator 3-phase 50Hz 380V-400V D Max ambient temp=40 DC . Stator 3-phase 60Hz 440V-480V D Max ambient temp=70 DC . Stator 3-phase 50Hz 380V-400V D Max ambient temp=70 DC . Stator 3-phase 60Hz 440V-480V D Max ambient temp=40 DC	
60	51 007 12	Stator 21-18-2b	1
		Stator 3-leads 3-phase 50Hz 380V-400V Y Max ambient temp=40 DC. Stator 3-leads 3-phase 60Hz 440V-480V Y Max ambient temp=40 DC	
60	51 007 10	Stator 21-18-2b	1
		Stator 3-phase 60Hz 380V-400V D Max ambient temp=70 DC . Stator 3-phase 60Hz 380V-400V D Max ambient temp=40 DC	
60	51 007 01	Stator 21-18-2b	1
		Stator 3-phase 50Hz 415V-440V D Max ambient temp=40 DC . Stator 3-phase 50Hz 415V-440V D Max ambient temp=70 DC	
60	51 007 03	Stator 21-18-2b	1
		Stator 3-phase 50Hz 500V D Max ambient temp=40 DC . Stator 3-phase 60Hz 575V-600V D Max ambient temp=70 DC . Stator 3-phase 50Hz 500V D Max ambient temp=70 DC . Stator 3-phase 60Hz 575V-600V D Max ambient temp=40 DC	
60	51 007 13	Stator 21-18-2b	1
		Stator 3-leads 3-phase 50Hz 500V Y Max ambient temp=40 DC. Stator 3-leads 3-phase 60Hz 575V-600V Y Max ambient temp=40 DC	
60	51 007 05	Stator 21-18-2b	1
		Stator 3-phase 50Hz 525V-550V D Max ambient temp=40 DC . Stator 3-phase 50Hz 525V-550V D Max ambient temp=70 DC	
61	410 033	Closed end splice 5.1-10.6; (AWG 18-8) L=38	1
70	410 074	Hexagon head screw M12X80-A4-80	1
71	132 424	Plain washer 12-A2-170	1
72	51 746 00	Sleeve unit	1

Pos. No	Part. No	Denomination	Qty/Version	
			181	
74	51 014 50	Impeller	N 50Hz 3-phase Max ambient temp=40 DC	1
74	51 014 52	Impeller	N 60Hz 3-phase Max ambient temp=40 DC	1
74	51 013 50	Impeller	H 50Hz 3-phase Max ambient temp=40 DC	1
74	51 013 52	Impeller	H 60Hz 3-phase Max ambient temp=40 DC	1
80	50 022 17	Hex.socket hd screw M10X25-A4-70		8
81	50 021 33	Hex.socket hd screw M8X20-A4-80		4
82	410 076	Hexagon flange screw M10X45-A2-70		6
83	410 000	Drive screw 4X5-A2/A4		4
84	132 354	Insulating hose D=20 MM		*
85	50 888 00	Data plate	Use 50 907 00 (EU), 50 907 01 (US) as spare part	1
86	50 994 00	Cover		1
86	50 994 01	Cover	For float switch	1
87	50 869 00	Air release valve		1
88	50 866 00	Handle compl.		2
90	51 739 00	Main cover		1
91	50 457 02	Cable tie 292X3.5 MM		2
92	410 757	Hex.socket hd screw M6X35-A2-70		2
93	51 024 00	El.lead through unit		1
94	51 674 00	Connection plate	Terminal board Max 750V CSA approved	1
94	51 001 03	Connection plate	Contacteur unit 50Hz 380V - 400V Y/D Not CSA approved	1
95	133 125	O-ring 6.1X1.6 NBR		2
96	50 037 34	O-ring 10.3X2.4 NBR		6
97	132 422	O-ring 219.3X5.7 NBR		1
98	410 087	O-ring 174.3X5.7 NBR		1
99	410 019	O-ring 159.3X5.7 NBR		1
104	51 059 00	Seal ring		1
105	50 826 01	Caution plate		1
106	410 026	Hex.socket hd screw M6X12-A4-70		2
107	50 900 63	Single-core cable	Contacteur unit 50Hz 220V - 240V Not CSA approved	1

Pos. No	Part. No	Denomination	Qty/Version	
			181	
107	50 900 69	Single-core cable	Contacteur unit 50Hz 220V - 240V Not CSA approved	1
107	50 900 68	Single-core cable	Softstarter 50Hz - 400V Not CSA approved	1
108	50 993 47	Contacteur unit	Contacteur unit 50Hz 220V - 240V Not CSA approved	1
108,1	50 995 01	Holder		1
108,4	51 511 07	Motor protector SMART		1
108,5	410 762	Contacteur		1
108,6	410 008	Hex.socket hd screw M4X16-A2-70		2
108,7	410 012	Lock nut		2
108,8	50 020 04	Hex.socket hd screw M6X20-A4-70		2
108,9	50 020 07	Lock nut M6-A4-70		2
108,17	50 900 62	Single-core cable		1
108,25	410 749	Overload relay		1
108,26	51 644 00	Holder		1
108,27	50 020 04	Hex.socket hd screw M6X20-A4-70		2
108,28	51 076 00	Cable set		1
108	50 993 48	Contacteur unit	Contacteur unit 50Hz 380V - 400V Not CSA approved	1
108,1	50 995 00	Holder		1
108,4	51 511 05	Motor protector SMART		1
108,5	410 816	Contacteur		1
108,6	410 008	Hex.socket hd screw M4X16-A2-70		2
108,7	410 012	Lock nut		2
108,8	410 008	Hex.socket hd screw M4X16-A2-70		2
108,9	410 012	Lock nut		2
108,17	50 900 62	Single-core cable		1
108,25	410 822	Overload relay		1
108,28	51 076 00	Cable set		1
108	50 993 48	Contacteur unit	Contacteur unit 50Hz 415V - 440V Not CSA approved	1
108,1	50 995 00	Holder		1
108,4	51 511 05	Motor protector SMART		1
108,5	410 816	Contacteur		1
108,6	410 008	Hex.socket hd screw M4X16-A2-70		2

Pos. No	Part. No	Denomination	Qty/Version
			181
108,7	410 012	Lock nut	2
108,8	410 008	Hex.socket hd screw M4X16-A2-70	2
108,9	410 012	Lock nut	2
108,17	50 900 62	Single-core cable	1
108,25	410 822	Overload relay	1
108,28	51 076 00	Cable set	1
108	50 993 50	Contactor unit Contactor unit 50Hz 500V Not CSA approved	1
108,1	50 995 00	Holder	1
108,4	51 511 05	Motor protector SMART	1
108,5	410 816	Contactor	1
108,6	410 008	Hex.socket hd screw M4X16-A2-70	2
108,7	410 012	Lock nut	2
108,8	410 008	Hex.socket hd screw M4X16-A2-70	2
108,9	410 012	Lock nut	2
108,17	50 900 62	Single-core cable	1
108,25	410 821	Overload relay	1
108,28	51 076 00	Cable set	1
108	50 993 55	Contactor unit Contactor unit 50Hz - 550V Not CSA approved	1
108,1	50 995 00	Holder	1
108,4	51 511 05	Motor protector SMART	1
108,5	410 901	Contactor	1
108,6	410 008	Hex.socket hd screw M4X16-A2-70	2
108,7	410 012	Lock nut	2
108,8	410 008	Hex.socket hd screw M4X16-A2-70	2
108,9	410 012	Lock nut	2
108,17	50 900 62	Single-core cable	1
108,25	410 896	Overload relay	1
108,28	51 076 00	Cable set	1
108	50 993 51	Contactor unit Contactor unit 60Hz 220V - 240V CSA approved	1
108,1	50 995 01	Holder	1
108,4	51 511 08	Motor protector SMART	1
108,5	410 762	Contactor	1
108,6	410 008	Hex.socket hd screw M4X16-A2-70	2

Pos. No	Part. No	Denomination	Qty/Version
			181
108,7	410 012	Lock nut	2
108,8	50 020 04	Hex.socket hd screw M6X20-A4-70	2
108,9	50 020 07	Lock nut M6-A4-70	2
108,17	50 900 62	Single-core cable	1
108,25	410 750	Overload relay	1
108,26	51 644 00	Holder	1
108,27	50 020 04	Hex.socket hd screw M6X20-A4-70	2
108,28	51 076 00	Cable set	1
108	50 993 52	Contactor unit Contactor unit 60Hz 380V - 400V CSA approved	1
108,1	50 995 00	Holder	1
108,4	51 511 06	Motor protector SMART	1
108,5	410 816	Contactor	1
108,6	410 008	Hex.socket hd screw M4X16-A2-70	2
108,7	410 012	Lock nut	2
108,8	410 008	Hex.socket hd screw M4X16-A2-70	2
108,9	410 012	Lock nut	2
108,17	50 900 62	Single-core cable	1
108,25	410 823	Overload relay	1
108,28	51 076 00	Cable set	1
108	50 993 37	Contactor unit Contactor unit 60Hz 440V - 480V CSA approved	1
108,1	50 995 00	Holder	1
108,4	51 511 06	Motor protector SMART	1
108,5	410 816	Contactor	1
108,6	410 008	Hex.socket hd screw M4X16-A2-70	2
108,7	410 012	Lock nut	2
108,8	410 008	Hex.socket hd screw M4X16-A2-70	2
108,9	410 012	Lock nut	2
108,17	50 900 62	Single-core cable	1
108,25	410 822	Overload relay	1
108,28	51 076 00	Cable set	1
108	50 993 46	Contactor unit Contactor unit 60Hz 575V - 600V CSA approved	1
108,1	50 995 00	Holder	1
108,4	51 511 06	Motor protector SMART	1

Pos. No	Part. No	Denomination	Qty/Version
			181
108,5	410 901	Contacteur	1
108,6	410 008	Hex.socket hd screw M4X16-A2-70	2
108,7	410 012	Lock nut	2
108,8	410 008	Hex.socket hd screw M4X16-A2-70	2
108,9	410 012	Lock nut	2
108,17	50 900 62	Single-core cable	1
108,25	410 896	Overload relay	1
108,28	51 076 00	Cable set	1
108	50 993 52	Contacteur unit Contacteur unit 60Hz 380V - 400V Not CSA approved	1
108,1	50 995 00	Holder	1
108,4	51 511 06	Motor protector SMART	1
108,5	410 816	Contacteur	1
108,6	410 008	Hex.socket hd screw M4X16-A2-70	2
108,7	410 012	Lock nut	2
108,8	410 008	Hex.socket hd screw M4X16-A2-70	2
108,9	410 012	Lock nut	2
108,17	50 900 62	Single-core cable	1
108,25	410 823	Overload relay	1
108,28	51 076 00	Cable set	1
108	50 993 47	Contacteur unit Contacteur unit 50Hz 220V - 240V Float switch Not CSA approved	1
108,1	50 995 01	Holder	1
108,4	51 511 07	Motor protector SMART	1
108,5	410 762	Contacteur	1
108,6	410 008	Hex.socket hd screw M4X16-A2-70	2
108,7	410 012	Lock nut	2
108,8	50 020 04	Hex.socket hd screw M6X20-A4-70	2
108,9	50 020 07	Lock nut M6-A4-70	2
108,17	50 900 62	Single-core cable	1
108,25	410 749	Overload relay	1
108,26	51 644 00	Holder	1
108,27	50 020 04	Hex.socket hd screw M6X20-A4-70	2
108,28	51 076 00	Cable set	1

Pos. No	Part. No	Denomination	Qty/Version
			181
108	50 993 48	Contactor unit Contactor unit 50Hz 380V - 400V Float switch Not CSA approved	1
108,1	50 995 00	Holder	1
108,4	51 511 05	Motor protector SMART	1
108,5	410 816	Contactor	1
108,6	410 008	Hex.socket hd screw M4X16-A2-70	2
108,7	410 012	Lock nut	2
108,8	410 008	Hex.socket hd screw M4X16-A2-70	2
108,9	410 012	Lock nut	2
108,17	50 900 62	Single-core cable	1
108,25	410 822	Overload relay	1
108,28	51 076 00	Cable set	1
108	50 993 51	Contactor unit Contactor unit 60Hz 220V - 240V Float switch CSA approved	1
108,1	50 995 01	Holder	1
108,4	51 511 08	Motor protector SMART	1
108,5	410 762	Contactor	1
108,6	410 008	Hex.socket hd screw M4X16-A2-70	2
108,7	410 012	Lock nut	2
108,8	50 020 04	Hex.socket hd screw M6X20-A4-70	2
108,9	50 020 07	Lock nut M6-A4-70	2
108,17	50 900 62	Single-core cable	1
108,25	410 750	Overload relay	1
108,26	51 644 00	Holder	1
108,27	50 020 04	Hex.socket hd screw M6X20-A4-70	2
108,28	51 076 00	Cable set	1
108	50 993 58	Contactor unit Contactor unit 50Hz 415V - 440V Float switch with isolated input Not CSA approved	1
108,1	50 995 00	Holder	1
108,4	51 511 05	Motor protector SMART	1
108,5	410 816	Contactor	1
108,6	410 008	Hex.socket hd screw M4X16-A2-70	2
108,7	410 012	Lock nut	2

Pos. No	Part. No	Denomination	Qty/Version
			181
108,8	410 008	Hex.socket hd screw M4X16-A2-70	2
108,9	410 012	Lock nut	2
108,17	50 900 62	Single-core cable	1
108,25	410 822	Overload relay	1
108,28	51 076 00	Cable set	1
108,29	51 779 00	Supervision relay	1
108,30	50 457 00	Cable tie	1
108	50 993 59	Contactor unit	1
		Contactor unit 50Hz 500V Float switch with isolated input	
108,1	50 995 00	Holder	1
108,4	51 511 05	Motor protector SMART	1
108,5	410 816	Contactor	1
108,6	410 008	Hex.socket hd screw M4X16-A2-70	2
108,7	410 012	Lock nut	2
108,8	410 008	Hex.socket hd screw M4X16-A2-70	2
108,9	410 012	Lock nut	2
108,17	50 900 62	Single-core cable	1
108,25	410 821	Overload relay	1
108,28	51 076 00	Cable set	1
108,29	51 779 00	Supervision relay	1
108,30	50 457 00	Cable tie	1
108	-	Contactor unit	1
		Contactor unit 50Hz 525V - 550V Float switch with isolated input	
108,1	50 995 00	Holder	1
108,4	51 511 05	Motor protector SMART	1
108,5	410 901	Contactor	1
108,6	410 008	Hex.socket hd screw M4X16-A2-70	2
108,7	410 012	Lock nut	2
108,8	410 008	Hex.socket hd screw M4X16-A2-70	2
108,9	410 012	Lock nut	2
108,17	50 900 62	Single-core cable	1
108,25	410 896	Overload relay	1
108,28	51 076 00	Cable set	1
108,29	51 779 00	Supervision relay	1
108,30	50 457 00	Cable tie	1

Pos. No	Part. No	Denomination	Qty/Version
			181
108	50 993 60	Contactor unit	1
		Contactor unit 60Hz 380V - 400V Float switch with isolated input CSA approved	
108,1	50 995 00	Holder	1
108,4	51 511 06	Motor protector SMART	1
108,5	410 816	Contactor	1
108,6	410 008	Hex.socket hd screw M4X16-A2-70	2
108,7	410 012	Lock nut	2
108,8	410 008	Hex.socket hd screw M4X16-A2-70	2
108,9	410 012	Lock nut	2
108,17	50 900 62	Single-core cable	1
108,25	410 823	Overload relay	1
108,28	51 076 00	Cable set	1
108,29	51 779 00	Supervision relay	1
108,30	50 457 00	Cable tie	1
108	50 993 56	Contactor unit	1
		Contactor unit 60Hz 440V - 480V Float switch with isolated input CSA approved	
108,1	50 995 00	Holder	1
108,4	51 511 06	Motor protector SMART	1
108,5	410 816	Contactor	1
108,6	410 008	Hex.socket hd screw M4X16-A2-70	2
108,7	410 012	Lock nut	2
108,8	410 008	Hex.socket hd screw M4X16-A2-70	2
108,9	410 012	Lock nut	2
108,17	50 900 62	Single-core cable	1
108,25	410 822	Overload relay	1
108,28	51 076 00	Cable set	1
108,29	51 779 00	Supervision relay	1
108,30	50 457 00	Cable tie	1
108	50 993 57	Contactor unit	1
		Contactor unit 60Hz 575V Float switch with isolated input CSA approved	
108,1	50 995 00	Holder	1
108,4	51 511 06	Motor protector SMART	1
108,5	410 901	Contactor	1

Pos. No	Part. No	Denomination	Qty/Version
			181
108,6	410 008	Hex.socket hd screw M4X16-A2-70	2
108,7	410 012	Lock nut	2
108,8	410 008	Hex.socket hd screw M4X16-A2-70	2
108,9	410 012	Lock nut	2
108,17	50 900 62	Single-core cable	1
108,25	410 896	Overload relay	1
108,28	51 076 00	Cable set	1
108,29	51 779 00	Supervision relay	1
108,30	50 457 00	Cable tie	1
108	50 999 02	Contactor unit	1
		Contactor unit 50Hz 380V - 400V Y/D Not CSA approved	
108,1	410 008	Hex.socket hd screw M4X16-A2-70	8
108,2	410 012	Lock nut	8
108,3	410 146	Contactor	3
108,4	410 088	Holder	1
108,4	50 998 00	Holder	1
108,4	51 030 00	Rail	1
108,5	410 102	Overload relay	1
108,6	105 839	Cable tie 98X2.5 MM	2
108,7	50 148 02	Time relay	1
108,8	50 509 00	Cable set	1
108,8	51 002 01	Cable set	1
108,9	51 511 05	Motor protector SMART	1
108	50 999 03	Contactor unit	1
		Contactor unit 60Hz 460V Y/D Not CSA approved	
108,1	410 008	Hex.socket hd screw M4X16-A2-70	8
108,2	410 012	Lock nut	8
108,3	410 088	Holder	1
108,3	50 998 00	Holder	1
108,3	51 030 00	Rail	1
108,4	410 102	Overload relay	1
108,5	105 839	Cable tie 98X2.5 MM	2
108,6	50 148 02	Time relay	1
108,7	410 381	Contactor	3
108,8	50 509 00	Cable set	1
108,8	51 002 01	Cable set	1

Pos. No	Part. No	Denomination	Qty/Version
			181
108,9	51 511 06	Motor protector SMART	1
109	51 639 02	Cable set	1
110	410 026	Hex.socket hd screw M6X12-A4-70	2
111	410 171	Stud M12X35-A2-70	4
112	410 139	Insulating hose D=12 MM	*
113	51 318 03	Softstarter	1
113,1	410 008	Hex.socket hd screw M4X16-A2-70	1
113,2	50 018 00	Hex.socket hd screw	2
113,3	50 018 00	Hex.socket hd screw	2
113,4	410 012	Lock nut	1
113,5	410 012	Lock nut	2
113,6	410 012	Lock nut	2
113,7	51 003 02	Overload protector	1
113,8	50 221 00	End sleeve 0.75 MM ² ; L=6 MM	1
113,9	410 390	Thermal detectors	1
113,11	50 900 00	Single-core cable 1MM ² ,L=70	1
113,12	50 900 02	Electric cable	1
113,13	50 900 13	Single-core cable	1
113,14	50 900 13	Single-core cable	1
113,15	51 625 00	Connection plate	1
113,16	51 319 00	Holder	1
113,17	51 320 00	Clamp	1
113,18	51 321 00	Bracket	1
114	51 748 00	Sticker SOFTSTARTER PH.SEQ. GUARD	1
115	51 742 00	Terminal plate unit	1
117	410 077	Cable clamp STAINLESS STEEL, CR	1
118	51 726 06	Level regulator unit EU	1
		Contactor unit 50Hz 220V - 240V Float switch Not CSA approved	
118,2	410 872	Flat pin sleeve	1
118,3	50 040 05	Insulating sleeve 0.5-6 MM ²	1
118,4	50 221 01	End sleeve 1.5 MM ² ; L=7 MM	1
118,6	410 873	Cable lug UL/CSA 0.5-1.65 MM ²	1

Pos. No	Part. No	Denomination	Qty/Version
			181
118,7	410 034	Closed end splice 3-6(AWG 12-10) L=18	1
118,8	410 774	Level switch	1
118,9	410 370	Plain washer	1
118,10	51 278 00	Bending protection	1
118,11	410 367	Gland screw	1
118	51 726 08	Level regulator unit EU	1
		Contactor unit 50Hz 380V - 400V Float switch Not CSA approved	
118,1	410 872	Flat pin sleeve	1
118,2	50 040 05	Insulating sleeve 0.5-6 MM2	1
118,3	50 221 01	End sleeve 1.5 MM2; L=7 MM	1
118,5	410 873	Cable lug UL/CSA 0.5-1.65 MM2	1
118,6	410 034	Closed end splice 3-6(AWG 12-10) L=18	1
118,7	410 370	Plain washer	1
118,8	50 176 00	Level switch	1
118,9	51 278 00	Bending protection	1
118,10	410 367	Gland screw	1
118	51 726 07	Level regulator unit US/CDN	1
		Contactor unit 60Hz 220V - 240V Float switch CSA approved	
118,2	410 872	Flat pin sleeve	1
118,3	50 040 05	Insulating sleeve 0.5-6 MM2	1
118,4	50 221 01	End sleeve 1.5 MM2; L=7 MM	1
118,6	410 873	Cable lug UL/CSA 0.5-1.65 MM2	1
118,7	410 034	Closed end splice 3-6(AWG 12-10) L=18	1
118,9	410 868	Level switch	1
118,10	410 370	Plain washer	1
118,11	51 278 00	Bending protection	1
118,12	410 367	Gland screw	1
118,13	50 892 14	Connection plate	1
118,10	51 278 00	Bending protection	1
		Contactor unit 50Hz 415V - 440V Float switch with isolated input Not CSA approved	
118,2	410 872	Flat pin sleeve	1

Pos. No	Part. No	Denomination	Qty/Version
			181
118,3	50 040 05	Insulating sleeve 0.5-6 MM2	1
118,4	50 221 01	End sleeve 1.5 MM2; L=7 MM	1
118,6	410 873	Cable lug UL/CSA 0.5-1.65 MM2	1
118,7	410 034	Closed end splice 3-6(AWG 12-10) L=18	1
118,8	410 774	Level switch	1
118,9	410 370	Plain washer	1
118,11	410 367	Gland screw	1
118,10	51 278 00	Bending protection	1
		Contactor unit 50Hz 500V Float switch with isolated input	
118,2	410 872	Flat pin sleeve	1
118,3	50 040 05	Insulating sleeve 0.5-6 MM2	1
118,4	50 221 01	End sleeve 1.5 MM2; L=7 MM	1
118,6	410 873	Cable lug UL/CSA 0.5-1.65 MM2	1
118,7	410 034	Closed end splice 3-6(AWG 12-10) L=18	1
118,8	410 774	Level switch	1
118,9	410 370	Plain washer	1
118,11	410 367	Gland screw	1
118,10	410 370	Plain washer	1
118,2	410 872	Flat pin sleeve	1
118,3	50 040 05	Insulating sleeve 0.5-6 MM2	1
118,4	50 221 01	End sleeve 1.5 MM2; L=7 MM	1
118,6	410 873	Cable lug UL/CSA 0.5-1.65 MM2	1
118,7	410 034	Closed end splice 3-6(AWG 12-10) L=18	1
118,9	410 868	Level switch	1
118,11	51 278 00	Bending protection	1
118,12	410 367	Gland screw	1
118,13	50 892 14	Connection plate	1
118,10	410 370	Plain washer	1
		Contactor unit 60Hz 380V - 400V Float switch with isolated input CSA approved	
118,2	410 872	Flat pin sleeve	1

Pos. No	Part. No	Denomination	Qty/Version
			181
118,3	50 040 05	Insulating sleeve 0.5-6 MM2	1
118,4	50 221 01	End sleeve 1.5 MM2; L=7 MM	1
118,6	410 873	Cable lug UL/CSA 0.5-1.65 MM2	1
118,7	410 034	Closed end splice 3-6(AWG 12-10) L=18	1
118,9	410 868	Level switch	1
118,11	51 278 00	Bending protection	1
118,12	410 367	Gland screw	1
118,13	50 892 14	Connection plate	1
118,10	410 370	Plain washer	1
		Contactor unit 60Hz 440V - 480V Float switch with isolated input CSA approved	
118,2	410 872	Flat pin sleeve	1
118,3	50 040 05	Insulating sleeve 0.5-6 MM2	1
118,4	50 221 01	End sleeve 1.5 MM2; L=7 MM	1
118,6	410 873	Cable lug UL/CSA 0.5-1.65 MM2	1
118,7	410 034	Closed end splice 3-6(AWG 12-10) L=18	1
118,9	410 868	Level switch	1
118,11	51 278 00	Bending protection	1
118,12	410 367	Gland screw	1
118,13	50 892 14	Connection plate	1
118,10	410 370	Plain washer	1
		Contactor unit 60Hz 575V Float switch with isolated input CSA approved	
118,2	410 872	Flat pin sleeve	1
118,3	50 040 05	Insulating sleeve 0.5-6 MM2	1
118,4	50 221 01	End sleeve 1.5 MM2; L=7 MM	1
118,6	410 873	Cable lug UL/CSA 0.5-1.65 MM2	1
118,7	410 034	Closed end splice 3-6(AWG 12-10) L=18	1
118,9	410 868	Level switch	1
118,11	51 278 00	Bending protection	1
118,12	410 367	Gland screw	1
118,13	50 892 14	Connection plate	1

Pos. No	Part. No	Denomination	Qty/Version
			181
119	51 749 00	Bracket	1
120	410 010	Hex.socket hd screw M8X12-A2-70	1
121	50 021 37	Hexagon nut M8-A4-70	1
		Contacteur unit 50Hz 220V - 240V Float switch Not CSA approved	
121	131 028	Motor cable subcab	*
		Starter (Phase shifter) 3- phase 50/60 Hz 220V - 575V Current range 0 - 48A Cable type: SUBCAB 4G6	
121	410 133	Motor cable subcab	*
		Starter (Phase shifter) 3- phase 50/60 Hz 220V - 575V Current range 0 - 48A Cable type: SUBCAB 8AWG/4	
123	51 735 01	Sticker	2
		Starter (Phase shifter) 3- phase 50/60 Hz 220V - 575V Current range 0 - 48A Cable type: SUBCAB 4G6	
123	51 735 00	Sticker	1
		Starter (Phase shifter) 3- phase 50/60 Hz 380V - 415V Current range 0 - 48A Cable type: SUBCAB 4G6 Supply connection CEE 5- PLUG 63A	
124	51 735 01	Sticker	2
130	410 197	Hexagon head screw M12X35-A2-70	2
131	132 424	Plain washer 12-A2-170	2
132	410 026	Hex.socket hd screw M6X12-A4-70	2
133	50 221 01	End sleeve 1.5 MM2; L=7 MM	2
134	50 902 00	Earthing plate	1
135	132 334	Plain washer (30)-32 MM	4
		Power cable x 1 SUBCAB 4G2,5+2x1,5 17 - 18mm L= 20m	
135	132 336	Plain washer (32)-34 MM	4
		Power cable x 1 SUBCAB 8AWG/4 24 - 26mm L= 16m	
135	132 312	Plain washer (33)-35 MM	4
		Power cable x 1 SUBCAB 4AWG/3-2-1-GC 32,8 - 34,8mm L= 16m	
136	410 112	Seal sleeve (14)-17 MM	2
		Power cable x 1 SUBCAB 4G4 16 - 17mm L= 20m	
136	410 113	Seal sleeve (17)-20 MM	2
		Power cable x 1 SUBCAB 4G2,5+2x1,5 17 - 18mm L= 20m	

Pos. No	Part. No	Denomination	Qty/Version	
			181	
136	410 114	Seal sleeve (20)-23 MM	Power cable x 1 SUBCAB 4G4+2x1,5 20 - 22mm L= 20m	2
136	410 115	Seal sleeve (23)-26 MM	Power cable x 1 SUBCAB 7G4+2x1,5 24 - 26mm L= 20m	2
136	410 116	Seal sleeve (26)-29 MM	Power cable x 1 SUBCAB 4G16+S(2x0,5) 26 - 28mm L= 20m	2
136	410 118	Seal sleeve (32)-35 MM	Power cable x 1 SUBCAB 4AWG/3-2-1-GC 32,8 - 34,8mm L= 16m	2
137	51 249 04	Plate		1
138	51 025 02	Ring		1
139	51 033 04	Entrance flange		1
140	50 777 00	Motor cable subcab	Power cable x 1 SUBCAB 4G2,5+2x1,5 17 - 18mm L= 20m	*
140	133 139	Motor cable subcab	Power cable x 1 SUBCAB 4G4 16 - 17mm L= 20m	*
140	410 129	Motor cable subcab	Power cable x 1 SUBCAB 4G4+2x1,5 20 - 22mm L= 20m	*
140	410 130	Motor cable subcab	Power cable x 1 SUBCAB 7G4+2x1,5 24 - 26mm L= 20m	*
140	131 028	Motor cable subcab	Power cable x 1 SUBCAB 4G6 18 - 19mm L= 20m	*
140	410 126	Motor cable subcab	Power cable x 1 SUBCAB 4G6+2x1,5 24 - 26mm L= 20m	*
140	410 858	Motor cable subcab	Power cable x 1 SUBCAB 7G6+S(2x0,5) 24 - 26mm L= 20m	*
140	410 852	Motor cable subcab	Power cable x 1 SUBCAB 4G10+S(2x0,5) 24 - 26mm L= 20m	*
140	410 853	Motor cable subcab	Power cable x 1 SUBCAB 4G16+S(2x0,5) 26 - 28mm L= 20m	*
140	410 068	Motor cable subcab	Power cable x 1 SUBCAB 12AWG/7 22 - 20mm L= 16m	*
140	410 132	Motor cable subcab	Power cable x 1 SUBCAB 10AWG/4 18 - 19,7mm L= 16m	*
140	410 069	Motor cable	Power cable x 1 SUBCAB 10AWG/3-2-1-GC 20,3 - 22,3mm L= 16m	*

Pos. No	Part. No	Denomination		Qty/Version
				181
140	410 133	Motor cable subcab	Power cable x 1 SUBCAB 8AWG/4 24 - 26mm L= 16m	*
140	410 134	Motor cable	Power cable x 1 SUBCAB 8AWG/3-2-1-GC 27,2 - 29,2mm L= 16m	*
140	410 136	Motor cable	Power cable x 1 SUBCAB 4AWG/3-2-1-GC 32,8 - 34,8mm L= 16m	*
140	410 060	Motor cable	Power cable x 1 Screened 6x2,5+2x1,5 18,1 - 19,9mm L= 20m	*
140	410 860	Motor cable subcab	Power cable x 1 SUBCAB S3x2,5+3x2,5/3+S(4x0,5) 18 - 20mm L= 20m	*
140	410 861	Motor cable subcab	Power cable x 1 SUBCAB S3x6+3x6/3+S(4x0,5) 20 - 22mm L= 20m	*
140	410 862	Motor cable subcab	Power cable x 1 SUBCAB S3x16+3x16/3+S(4x0,5) 24 - 26mm L= 20m	*
141	410 086	O-ring 49.5X3 NBR		1
142	410 875	Cap 6X16 MM PVC	Power cable x 1 SUBCAB 7G6+S(2x0,5) 24 - 26mm L= 20m	1
142	410 874	Cap 5X10 MM PVC	Power cable x 1 SUBCAB S3x2,5+3x2,5/3+S(4x0,5) 18 - 20mm L= 20m	1
142	410 876	Cap 7X16 MM PVC	Power cable x 1 SUBCAB S3x16+3x16/3+S(4x0,5) 24 - 26mm L= 20m	1
143	410 879	Cap 25X45 MM PVC	Power cable x 1 SUBCAB 7G6+S(2x0,5) 24 - 26mm L= 20m	1
143	410 878	Cap 24X45 MM PVC	Power cable x 1 SUBCAB 4G10+S(2x0,5) 24 - 26mm L= 20m	1
143	410 880	Cap 26X45 MM PVC	Power cable x 1 SUBCAB 4G16+S(2x0,5) 26 - 28mm L= 20m	1
143	410 629	Cap 18X25 MM PVC	Power cable x 1 SUBCAB S3x2,5+3x2,5/3+S(4x0,5) 18 - 20mm L= 20m	1
143	410 631	Cap 21X45 MM PVC	Power cable x 1 SUBCAB S3x6+3x6/3+S(4x0,5) 20 - 22mm L= 20m	1
143	410 877	Cap 23X45 MM PVC	Power cable x 1 SUBCAB S3x16+3x16/3+S(4x0,5) 24 - 26mm L= 20m	1

Pos. No	Part. No	Denomination	Qty/Version
			181
144	50 221 00	End sleeve 0.75 MM ² ; L=6 MM Power cable x 1 SUBCAB 7G6+S(2x0,5) 24 - 26mm L= 20m	2
144	50 221 01	End sleeve 1.5 MM ² ; L=7 MM Power cable x 1 SUBCAB 4G16+S(2x0,5) 26 - 28mm L= 20m	2
144	50 221 03	End sleeve 4 MM ² ; L=10 MM Power cable x 1 SUBCAB 4AWG/3-2-1-GC 32,8 - 34,8mm L= 16m	3
144	50 221 05	End sleeve 10 MM ² ; L=12 MM Power cable x 1 SUBCAB 4AWG/3-2-1-GC 32,8 - 34,8mm L= 16m	1
144	50 221 07	End sleeve 25 MM ² ; L=15 MM Power cable x 1 SUBCAB 4AWG/3-2-1-GC 32,8 - 34,8mm L= 16m	3
145	410 881	Closed end splice 0.33-0.82(AWG 22-18) L=18 Power cable x 1 SUBCAB 7G6+S(2x0,5) 24 - 26mm L= 20m	2
145	410 034	Closed end splice 3-6(AWG 12-10) L=18 Power cable x 1 SUBCAB S3x2,5+3x2,5/3+S(4x0,5) 18 - 20mm L= 20m	1
146	410 873	Cable lug UL/CSA 0.5-1.65 MM ²	1
147	410 885	Tape	*
148	410 883	Insulating hose pvc D=3 MM Power cable x 1 SUBCAB 7G6+S(2x0,5) 24 - 26mm L= 20m	*
148	410 884	Insulating hose pvc D=8 MM Power cable x 1 SUBCAB S3x2,5+3x2,5/3+S(4x0,5) 18 - 20mm L= 20m	*
151	50 020 04	Hex.socket hd screw M6X20-A4-70 Power cable x 1 SUBCAB 12AWG/7 22 - 20mm L= 16m	2
151	410 026	Hex.socket hd screw M6X12-A4-70 Power cable x 1 SUBCAB 10AWG/3-2-1-GC 20,3 - 22,3mm L= 16m	2
153	410 054	Shrink hose ID=6.4 MM Power cable x 1 Screened 6x2,5+2x1,5 18,1 - 19,9mm L= 20m	*
153	410 122	Shrink hose ID=9.5 MM Power cable x 1 SUBCAB S3x16+3x16/3+S(4x0,5) 24 - 26mm L= 20m	*
166	410 011	Hexagon nut M12-A4-70	4
167	132 424	Plain washer 12-A2-170	4
168	50 897 00	U-ring	1
169	50 919 00	Discharge connection Discharge Connection DN 100 Hose 4" aluminium	1

Pos. No	Part. No	Denomination	Qty/Version	
			181	
169	50 919 01	Discharge connection	Discharge Connection DN 100 Thread : ISO G4A Outer aluminium	1
169	50 919 03	Discharge connection	Discharge Connection DN 100 Thread : Victaulic groove Outer aluminium	1
169	50 919 02	Discharge connection	Discharge Connection DN 100 Thread : NPT 4-8 Outer aluminium	1
169	51 038 05	Discharge connection	Discharge Connection DN 150 Hose 6" aluminium	1
169	51 038 06	Discharge connection	Discharge Connection DN 150 Thread : ISO G6A Outer aluminium	1
169	51 038 09	Discharge connection	Discharge Connection DN 150 Thread : Victaulic groove Outer aluminium	1
169	51 038 08	Discharge connection	Discharge Connection DN 150 Thread : NPT 6-8 Outer aluminium	1
170	410 030	Coupling part DN 110 INNER THREAD G4	Discharge Connection DN 100 Thread : ISO G4A Outer Quick coupling: Storz aluminium	1
170	410 029	Coupling part	Discharge Connection DN 100 Thread : ISO G4A Outer Quick coupling: Storz diam=115 mm aluminium	1
170	410 099	Coupling part	Discharge Connection DN 150 Thread : ISO G6A Outer Quick coupling: Storz aluminium	1
800	51 776 00	O-ring kit	Contains all O-rings with position numbers in the exploded view.	1
801	51 081 00	Zinc anode kit		1
900	51 784 00	Basic repair kit		1
901	410 685	Plug contact	Plug Contact 3-phase 50 Hz 380V - 415V Supply connection CEE 4-PLUG 32A	1
901	50 102 02	Phase shifter	Starter (Phase shifter) 3-phase 50/60 Hz 220V - 575V Current range 0 - 48A Cable type: SUBCAB 4G6	1
901	132 195	Plug contact	Starter (Phase shifter) 3-phase 50/60 Hz 380V - 415V Current range 0 - 48A Cable type: SUBCAB 4G6 Supply connection CEE 5-PLUG 63A	1
902	51 125 02	Adapter unit		1

Parts

Pos. No	Part. No	Denomination	Qty/Version
			181
902	51 125 03	Adapter unit WITH EXTENDER	1



grindex

www.grindex.com

AM - LASER UND BAUGERÄTE HANDELS GMBH

Adresse: Oberes Bahnhof 2
Telefon: (+43 2249) 28 495
e-mail: office@am-laser.at

A-2281 Raasdorf
Fax: (+43 2249) 28 495-20
web: www.am-laser.at / www.allround.cc



Verkauf ● Miete ● Service ● Reparatur