

Parts List

8105.182 Master



Table of Contents

Introduction	2
Specially approved products.....	2
Product Description	3
The data plate.....	3
Parts	4
Exploded view.....	4
List of parts.....	5

Introduction

Purpose of this manual

The purpose of this manual is to provide necessary information on spare parts and accessories order.

Disclaimer

Always use genuine Grindex parts. The use of other spare parts or accessories can invalidate any claims for warranty or compensation. Grindex does not take any responsibility for damages that are caused by the use of non-original parts. For more information, contact your local sales and service representative.

Data for ordering spare parts

The following information is needed for spare part orders:

- Serial number of the product
- Part number
- Quantity of bulk material, see * in tables

Specially approved products

Qualification of personnel

Only Grindex or Grindex-authorized service personnel may undertake repair work on Ex-approved products.

Dimensional accuracy inspection

Spare parts marked with (Ex) after the part number are subject to dimensional accuracy inspection.

Product Description

Products included

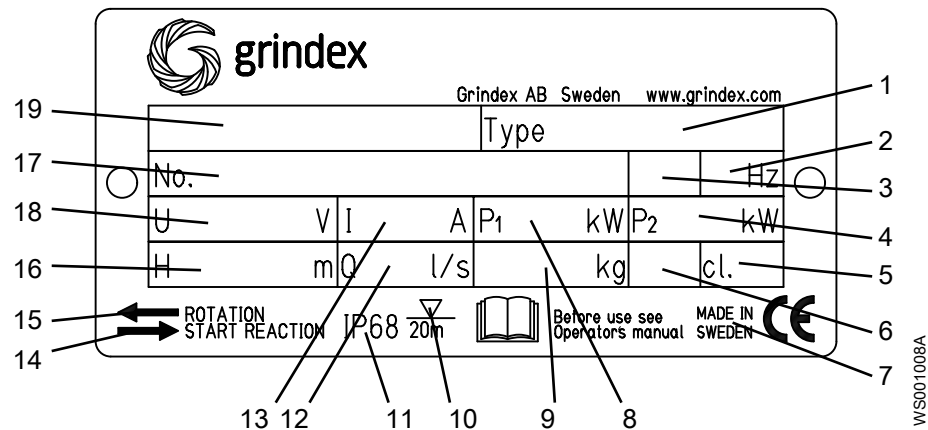
Pump model	Approvals
Master 8105.182	Standard

The data plate

Introduction

The data plate is a metal label located on the main body of the pump. The data plate lists key product specifications.

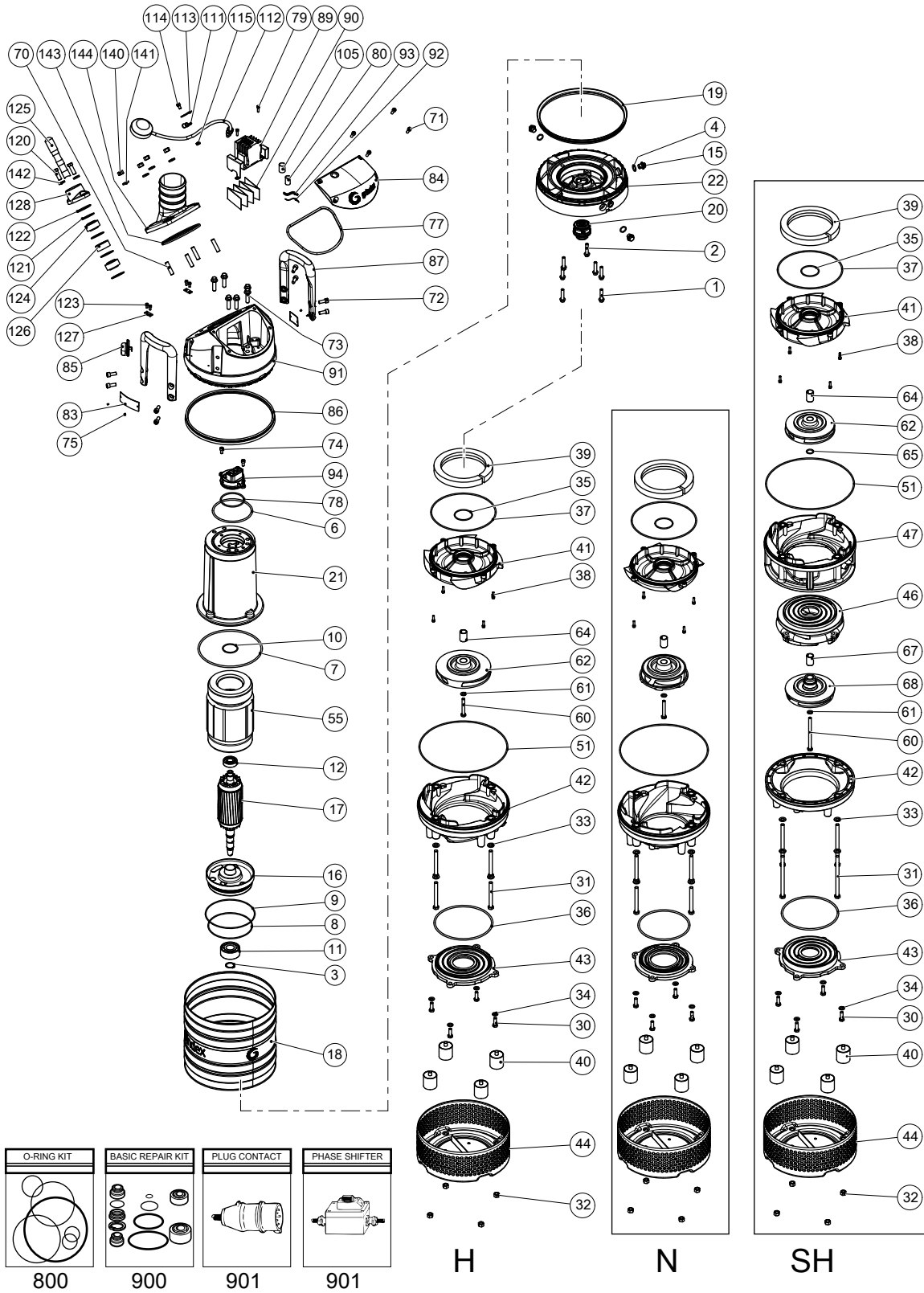
The data plate



1. Pump type number
2. Frequency
3. Phases, type of current
4. Rated shaft power
5. Thermal class
6. Locked rotor code-letter
7. Country of origin
8. Maximum power consumption
9. Product weight
10. Maximum submersion depth
11. Degree of protection
12. Maximum capacity
13. Rated current
14. Direction of the start reaction
15. Direction of the impeller rotation
16. Maximum head
17. Serial number
18. Rated voltage
19. Pump model

Parts

Exploded view



20148A_8105_182_expl_view

List of parts

Table 1: 8105

Pos. No	Part. No	Denomination	Qty/Version	
			182	
1	410 076	Hexagon flange screw M10X45-A2-70	4	
2	410 076	Hexagon flange screw M10X45-A2-70	3	
3	410 810	Retaining ring SGA 30	1	
4	410 487	O-ring 19.2X3 FPM	3	
5	410 487	O-ring 19.2X3 FPM	6	
6	130 943	O-ring 139.3X5.7 NBR	1	
7	132 422	O-ring 219.3X5.7 NBR	1	
8	140 078	O-ring 156X3 NBR	1	
9	410 022	O-ring 175X3 NBR	1	
10	410 023	O-ring 52.5X3.0 FPM	1	
11	410 100	Ball bearing 30X72X30.2 MM	1	
12	50 287 04	Ball bearing 20X52X15 MM	1	
13	410 053	Oil ISO VG 32	*	
14	50 898 00	Marking tape	1	
15	133 063	Inspection screw	3	
16	51 026 00	Bearing holder	1	
17	51 034 01	Shaft unit	1	
18	50 863 00	Cooling jacket	1	
19	51 060 00	Seal ring	1	
20	51 755 51	Mechanical seal	1	
21	51 757 00	Stator housing	1	
22	51 049 03	Adapter	1	
26	50 136 00	Instruction label	1	
30	410 004	Hexagon head screw M10X30-A2-70	4	
31	410 075	Hexagon head screw M12X110-A2-70	N	4
31	410 403	Hexagon head screw M12X180-A2-70	SH	4
32	410 011	Hexagon nut M12-A4-70	4	
33	132 274	Plain washer 12-A2-A 170	4	
34	50 022 26	Plain washer 10-A4-170	4	
35	410 155	O-ring 62X3.0 FPM	1	
36	410 087	O-ring 174.3X5.7 NBR	N	1
36	410 090	O-ring 199.3X5.7 NBR	H	1

Pos. No	Part. No	Denomination	Qty/Version
			182
37	410 895	O-ring 230.0X4.0 FPM	1
38	50 020 04	Hex.socket hd screw M6X20-A4-70	4
39	410 107	Pressure equalizer L=650 MM	1
40	51 045 00	Damper complete	4
41	51 051 00	Seal housing cov.coa	N
41	51 050 00	Seal housing cov.coa	H
41	51 317 00	Seal housing cov.coa	SH
42	51 022 00	Diffuser coat.	N
42	51 021 00	Diffuser coat.	H
42	51 315 00	Diffuser coat.	SH
43	51 053 00	Suction cover	N
43	51 052 00	Suction cover	H
43	51 313 00	Suction cover	SH
44	51 054 00	Strainer	1
46	51 314 00	Diffuser	1
47	51 316 00	Diffuser coat.	1
55	51 008 08	Stator 18-15-2b	Stator 3-phase 60Hz 200V-208V D Max ambient temp=40 DC
55	51 008 02	Stator 18-15-2b	Stator 3-phase 50Hz 220V-240V D Max ambient temp=40 DC
55	51 008 06	Stator 18-15-2b	Stator 3-phase 60Hz 220V-240V D Max ambient temp=40 DC
55	51 008 04	Stator 18-15-2b	Stator 3-phase 60Hz 220V-240V Y// Max ambient temp=40 DC
55	51 008 11	Stator 18-15-2b	Stator 3-phase 60Hz 220V-230V D// Max ambient temp=40 DC
55	51 008 07	Stator 18-15-2b	Stator 3-phase 50Hz 380V-400V D Max ambient temp=40 DC . Stator 3- phase 60Hz 440V-480V D Max ambient temp=40 DC
55	51 008 14	Stator 18-15-2b	Stator 3-leads 3-phase 50Hz 380V-400V Y Max ambient temp=40 DC. Stator 3-leads 3-phase 60Hz 440V-480V Y Max ambient temp=40 DC
55	51 008 10	Stator 18-15-2b	Stator 3-phase 60Hz 380V-400V D Max ambient temp=40 DC

Pos. No	Part. No	Denomination	Qty/Version	
			182	
55	51 008 01	Stator 18-15-2b	Stator 3-phase 50Hz 415V-440V D Max ambient temp=40 DC	1
55	51 008 03	Stator 18-15-2b	Stator 3-phase 50Hz 500V D Max ambient temp=40 DC . Stator 3-phase 60Hz 575V-600V D Max ambient temp=40 DC	1
55	51 008 15	Stator 18-15-2b	Stator 3-leads 3-phase 50Hz 500V Y Max ambient temp=40 DC. Stator 3- leads 3-phase 60Hz 2-poles 575V-600V Y P2=11,20kW/ 15hp Max ambient temp=40 DC	1
55	51 008 05	Stator 18-15-2b	Stator 3-phase 50Hz 525V-550V D Max ambient temp=40 DC	1
56	410 034	Closed end splice 3-6(AWG 12-10) L=18		1
60	410 070	Hexagon head screw M10X70-A2-70	N 50Hz 3-phase Max ambient temp=40 DC	1
60	410 475	Hexagon head screw M10X140-A2-70	SH 50Hz 3-phase Max ambient temp=40 DC	1
61	50 022 26	Plain washer 10-A4-170		1
62	51 017 50	Impeller	N 50Hz 3-phase Max ambient temp=40 DC	1
62	51 017 52	Impeller	N 60Hz 3-phase Max ambient temp=40 DC	1
62	51 016 50	Impeller	H 50Hz 3-phase Max ambient temp=40 DC	1
62	51 016 54	Impeller	H 60Hz 3-phase Max ambient temp=40 DC	1
62	51 327 00	Impeller	SH 50Hz 3-phase Max ambient temp=40 DC	1
62	51 327 01	Impeller	SH 60Hz 3-phase Max ambient temp=40 DC	1
64	51 756 00	Sleeve unit		1
65	133 064	O-ring 19.2X3 NBR		1
67	51 756 00	Sleeve unit		1
68	51 328 00	Impeller	SH 50Hz 3-phase Max ambient temp=40 DC	1
68	51 328 01	Impeller	SH 60Hz 3-phase Max ambient temp=40 DC	1
70	410 171	Stud M12X35-A2-70		4
71	50 021 33	Hex.socket hd screw M8X20-A4-80		4

Pos. No	Part. No	Denomination	Qty/Version	
			182	
72	50 022 17	Hex.socket hd screw M10X25-A4-70	8	
73	410 071	Hexagon head screw M12X45-A4-70	6	
74	140 049	Hex.socket hd screw M8X16-A2-70	2	
75	410 000	Drive screw 4X5-A2/A4	4	
77	132 380	O-ring 194.3X5.7 NBR	1	
78	410 623	O-ring 78X4 NBR	1	
79	50 020 04	Hex.socket hd screw M6X20-A4-70	2	
80	410 123	Insulating hose D=16 MM	Terminal board Max 750V CSA approved	*
80	410 056	Insulating hose D=14 MM	Contacteur unit 50Hz 380V - 400V Y/D Not CSA approved	*
81	50 826 01	Caution plate		1
83	50 888 00	Data plate	Use 50 907 00 (EU), 50 907 01 (US) as spare part	1
84	50 862 00	Cover		1
84	50 862 01	Cover	For float switch	1
85	50 869 00	Air release valve		1
86	51 060 00	Seal ring		1
87	50 857 00	Handle		2
88	50 992 00	Sticker R1 145-22 AHT +R1 205 AP		1
89	50 993 38	Contacteur unit	Contacteur unit 50Hz 220V - 240V Not CSA approved	1
89,1	50 995 00	Holder		1
89,4	51 511 07	Motor protector SMART		1
89,5	410 815	Contacteur		1
89,6	410 008	Hex.socket hd screw M4X16-A2-70		2
89,7	410 012	Lock nut		2
89,8	410 008	Hex.socket hd screw M4X16-A2-70		2
89,9	410 012	Lock nut		2
89,17	50 900 62	Single-core cable		1
89,17	51 076 00	Cable set		1
89,25	410 822	Overload relay		1
89	50 993 40	Contacteur unit	Contacteur unit 50Hz 380V - 400V Not CSA approved	1
89,1	50 995 00	Holder		1

Pos. No	Part. No	Denomination	Qty/Version
			182
89,4	51 511 05	Motor protector SMART	1
89,5	410 814	Contactactor	1
89,6	410 008	Hex.socket hd screw M4X16-A2-70	2
89,7	410 012	Lock nut	2
89,8	410 008	Hex.socket hd screw M4X16-A2-70	2
89,9	410 012	Lock nut	2
89,17	50 900 62	Single-core cable	1
89,25	410 819	Overload relay	1
89,28	51 076 00	Cable set	1
89	50 993 40	Contactactor unit Contactactor unit 50Hz 415V - 440V Not CSA approved	1
89,1	50 995 00	Holder	1
89,4	51 511 05	Motor protector SMART	1
89,5	410 814	Contactactor	1
89,6	410 008	Hex.socket hd screw M4X16-A2-70	2
89,7	410 012	Lock nut	2
89,8	410 008	Hex.socket hd screw M4X16-A2-70	2
89,9	410 012	Lock nut	2
89,17	50 900 62	Single-core cable	1
89,25	410 819	Overload relay	1
89,28	51 076 00	Cable set	1
89	50 993 29	Contactactor unit Contactactor unit 50Hz 500V Not CSA approved	1
89,1	50 995 00	Holder	1
89,4	51 511 05	Motor protector SMART	1
89,5	410 814	Contactactor	1
89,6	410 008	Hex.socket hd screw M4X16-A2-70	2
89,7	410 012	Lock nut	2
89,8	410 008	Hex.socket hd screw M4X16-A2-70	2
89,9	410 012	Lock nut	2
89,17	50 900 62	Single-core cable	1
89,25	410 818	Overload relay	1
89,28	51 076 00	Cable set	1
89	50 993 54	Contactactor unit Contactactor unit 50Hz - 550V Not CSA approved	1
89,1	50 995 00	Holder	1

Pos. No	Part. No	Denomination	Qty/Version
			182
89,4	51 511 05	Motor protector SMART	1
89,5	410 893	Contactactor	1
89,6	410 008	Hex.socket hd screw M4X16-A2-70	2
89,7	410 012	Lock nut	2
89,8	410 008	Hex.socket hd screw M4X16-A2-70	2
89,9	410 012	Lock nut	2
89,17	50 900 62	Single-core cable	1
89,25	410 894	Overload relay	1
89,28	51 076 00	Cable set	1
89	50 993 42	Contactactor unit Contactactor unit 60Hz 200V - 208V CSA approved	1
89,1	50 995 00	Holder	1
89,4	51 511 08	Motor protector SMART	1
89,5	410 815	Contactactor	1
89,6	410 008	Hex.socket hd screw M4X16-A2-70	2
89,7	410 012	Lock nut	2
89,8	410 008	Hex.socket hd screw M4X16-A2-70	2
89,9	410 012	Lock nut	2
89,17	50 900 62	Single-core cable	1
89,25	410 823	Overload relay	1
89,28	51 076 00	Cable set	1
89	50 993 42	Contactactor unit Contactactor unit 60Hz 220V - 240V CSA approved	1
89,1	50 995 00	Holder	1
89,4	51 511 08	Motor protector SMART	1
89,5	410 815	Contactactor	1
89,6	410 008	Hex.socket hd screw M4X16-A2-70	2
89,7	410 012	Lock nut	2
89,8	410 008	Hex.socket hd screw M4X16-A2-70	2
89,9	410 012	Lock nut	2
89,17	50 900 62	Single-core cable	1
89,25	410 823	Overload relay	1
89,28	51 076 00	Cable set	1
89	50 993 34	Contactactor unit Contactactor unit 60Hz 380V - 400V CSA approved	1
89,1	50 995 00	Holder	1

Pos. No	Part. No	Denomination	Qty/Version
			182
89,4	51 511 06	Motor protector SMART	1
89,5	410 814	Contactactor	1
89,6	410 008	Hex.socket hd screw M4X16-A2-70	2
89,7	410 012	Lock nut	2
89,8	410 008	Hex.socket hd screw M4X16-A2-70	2
89,9	410 012	Lock nut	2
89,17	50 900 62	Single-core cable	1
89,25	410 820	Overload relay	1
89,28	51 076 00	Cable set	1
89	50 993 45	Contactactor unit Contactactor unit 60Hz 440V - 480V CSA approved	1
89,1	50 995 00	Holder	1
89,4	51 511 06	Motor protector SMART	1
89,5	410 814	Contactactor	1
89,6	410 008	Hex.socket hd screw M4X16-A2-70	2
89,7	410 012	Lock nut	2
89,8	410 008	Hex.socket hd screw M4X16-A2-70	2
89,9	410 012	Lock nut	2
89,17	50 900 62	Single-core cable	1
89,17	51 076 00	Cable set	1
89,25	410 819	Overload relay	1
89	50 993 36	Contactactor unit Contactactor unit 60Hz 575V - 600V CSA approved	1
89,1	50 995 00	Holder	1
89,4	51 511 06	Motor protector SMART	1
89,5	410 893	Contactactor	1
89,6	410 008	Hex.socket hd screw M4X16-A2-70	2
89,7	410 012	Lock nut	2
89,8	410 008	Hex.socket hd screw M4X16-A2-70	2
89,9	410 012	Lock nut	2
89,17	50 900 62	Single-core cable	1
89,25	410 894	Overload relay	1
89,28	51 076 00	Cable set	1
89	50 993 34	Contactactor unit Contactactor unit 60Hz 380V - 400V Not CSA approved	1
89,1	50 995 00	Holder	1

Pos. No	Part. No	Denomination	Qty/Version
			182
89,4	51 511 06	Motor protector SMART	1
89,5	410 814	Contactactor	1
89,6	410 008	Hex.socket hd screw M4X16-A2-70	2
89,7	410 012	Lock nut	2
89,8	410 008	Hex.socket hd screw M4X16-A2-70	2
89,9	410 012	Lock nut	2
89,17	50 900 62	Single-core cable	1
89,25	410 820	Overload relay	1
89,28	51 076 00	Cable set	1
89	50 993 38	Contactactor unit Contactactor unit 50Hz 220V - 240V Float switch Not CSA approved	1
89,1	50 995 00	Holder	1
89,4	51 511 07	Motor protector SMART	1
89,5	410 815	Contactactor	1
89,6	410 008	Hex.socket hd screw M4X16-A2-70	2
89,7	410 012	Lock nut	2
89,8	410 008	Hex.socket hd screw M4X16-A2-70	2
89,9	410 012	Lock nut	2
89,17	50 900 62	Single-core cable	1
89,17	51 076 00	Cable set	1
89,25	410 822	Overload relay	1
89	50 993 40	Contactactor unit Contactactor unit 50Hz 380V - 400V Float switch Not CSA approved	1
89,1	50 995 00	Holder	1
89,4	51 511 05	Motor protector SMART	1
89,5	410 814	Contactactor	1
89,6	410 008	Hex.socket hd screw M4X16-A2-70	2
89,7	410 012	Lock nut	2
89,8	410 008	Hex.socket hd screw M4X16-A2-70	2
89,9	410 012	Lock nut	2
89,17	50 900 62	Single-core cable	1
89,25	410 819	Overload relay	1
89,28	51 076 00	Cable set	1

Pos. No	Part. No	Denomination	Qty/Version
			182
89	50 993 42	Contactor unit	1
		Contactor unit 60Hz 200V - 208V Float switch CSA approved	
89,1	50 995 00	Holder	1
89,4	51 511 08	Motor protector SMART	1
89,5	410 815	Contactor	1
89,6	410 008	Hex.socket hd screw M4X16-A2-70	2
89,7	410 012	Lock nut	2
89,8	410 008	Hex.socket hd screw M4X16-A2-70	2
89,9	410 012	Lock nut	2
89,17	50 900 62	Single-core cable	1
89,25	410 823	Overload relay	1
89,28	51 076 00	Cable set	1
89	50 993 42	Contactor unit	1
		Contactor unit 60Hz 220V - 240V Float switch CSA approved	
89,1	50 995 00	Holder	1
89,4	51 511 08	Motor protector SMART	1
89,5	410 815	Contactor	1
89,6	410 008	Hex.socket hd screw M4X16-A2-70	2
89,7	410 012	Lock nut	2
89,8	410 008	Hex.socket hd screw M4X16-A2-70	2
89,9	410 012	Lock nut	2
89,17	50 900 62	Single-core cable	1
89,25	410 823	Overload relay	1
89,28	51 076 00	Cable set	1
89	50 993 40	Contactor unit	1
		Contactor unit 50Hz 415V - 440V Float switch with isolated input Not CSA approved	
89,1	50 995 00	Holder	1
89,4	51 511 05	Motor protector SMART	1
89,5	410 814	Contactor	1
89,6	410 008	Hex.socket hd screw M4X16-A2-70	2
89,7	410 012	Lock nut	2
89,8	410 008	Hex.socket hd screw M4X16-A2-70	2
89,9	410 012	Lock nut	2

Pos. No	Part. No	Denomination	Qty/Version
			182
89,17	50 900 62	Single-core cable	1
89,25	410 819	Overload relay	1
89,28	51 076 00	Cable set	1
89	50 993 29	Contactor unit	1
		Contactor unit 50Hz 500V Float switch with isolated input	
89,1	50 995 00	Holder	1
89,4	51 511 05	Motor protector SMART	1
89,5	410 814	Contactor	1
89,6	410 008	Hex.socket hd screw M4X16-A2-70	2
89,7	410 012	Lock nut	2
89,8	410 008	Hex.socket hd screw M4X16-A2-70	2
89,9	410 012	Lock nut	2
89,17	50 900 62	Single-core cable	1
89,25	410 818	Overload relay	1
89,28	51 076 00	Cable set	1
89	-	Contactor unit	1
		Contactor unit 50Hz 525V - 550V Float switch with isolated input	
89,1	50 995 00	Holder	1
89,4	51 511 05	Motor protector SMART	1
89,5	410 893	Contactor	1
89,6	410 008	Hex.socket hd screw M4X16-A2-70	2
89,7	410 012	Lock nut	2
89,8	410 008	Hex.socket hd screw M4X16-A2-70	2
89,9	410 012	Lock nut	2
89,17	50 900 62	Single-core cable	1
89,25	410 894	Overload relay	1
89,28	51 076 00	Cable set	1
89,29	51 779 00	Supervision relay	1
89,30	50 457 00	Cable tie	1
89	50 993 34	Contactor unit	1
		Contactor unit 60Hz 380V - 400V Float switch with isolated input CSA approved	
89,1	50 995 00	Holder	1
89,4	51 511 06	Motor protector SMART	1
89,5	410 814	Contactor	1

Pos. No	Part. No	Denomination	Qty/Version
			182
89,6	410 008	Hex.socket hd screw M4X16-A2-70	2
89,7	410 012	Lock nut	2
89,8	410 008	Hex.socket hd screw M4X16-A2-70	2
89,9	410 012	Lock nut	2
89,17	50 900 62	Single-core cable	1
89,25	410 820	Overload relay	1
89,28	51 076 00	Cable set	1
89	50 993 45	Contactor unit	1
		Contactor unit 60Hz 440V - 480V Float switch with isolated input CSA approved	
89,1	50 995 00	Holder	1
89,4	51 511 06	Motor protector SMART	1
89,5	410 814	Contactor	1
89,6	410 008	Hex.socket hd screw M4X16-A2-70	2
89,7	410 012	Lock nut	2
89,8	410 008	Hex.socket hd screw M4X16-A2-70	2
89,9	410 012	Lock nut	2
89,17	50 900 62	Single-core cable	1
89,17	51 076 00	Cable set	1
89,25	410 819	Overload relay	1
89	50 993 36	Contactor unit	1
		Contactor unit	
89,1	50 995 00	Holder	1
89,4	51 511 06	Motor protector SMART	1
89,5	410 893	Contactor	1
89,6	410 008	Hex.socket hd screw M4X16-A2-70	2
89,7	410 012	Lock nut	2
89,8	410 008	Hex.socket hd screw M4X16-A2-70	2
89,9	410 012	Lock nut	2
89,17	50 900 62	Single-core cable	1
89,25	410 894	Overload relay	1
89,28	51 076 00	Cable set	1
89	51 318 02	Softstarter COMPLETE UNIT	1
		Softstarter 50Hz - 400V Not CSA approved	
90	51 673 00	Connection plate	1
91	50 861 00	Cover	1

Pos. No	Part. No	Denomination	Qty/Version	
			182	
92	50 900 63	Single-core cable	Contacteur unit 50Hz 220V - 240V Not CSA approved	1
92	50 900 69	Single-core cable	Contacteur unit 50Hz 220V - 240V Not CSA approved	1
92	50 900 53	Single-core cable	Softstarter 50Hz - 400V Not CSA approved	1
93	51 639 01	Cable set		1
94	51 642 00	Terminal plate unit	Terminal board Max 750V CSA approved	1
94	51 758 00	El.lead through unit	Contacteur unit 50Hz 380V - 400V Y/D Not CSA approved	1
100	51 748 00	Sticker SOFTSTARTER PH.SEQ. GUARD		1
104	410 034	Closed end splice 3-6(AWG 12-10) L=18		1
105	132 354	Insulating hose D=20 MM		*
106	410 872	Flat pin sleeve		2
107	50 040 05	Insulating sleeve 0.5-6 MM2		2
111	410 077	Cable clamp STAINLESS STEEL, CR		1
111	133 139	Motor cable subcab	Starter (Phase shifter) 3-phase 50/60 Hz 220V - 575V Current range 0 - 22A Cable type: SUBCAB 4G4	*
111	410 067	Motor cable subcab	Starter (Phase shifter) 3-phase 50/60 Hz 220V - 575V Current range 0 - 22A Cable type: SUBCAB 12AWG/4	*
111	131 028	Motor cable subcab	Starter (Phase shifter) 3-phase 50/60 Hz 220V - 575V Current range 0 - 48A Cable type: SUBCAB 4G6	*
111	410 133	Motor cable subcab	Starter (Phase shifter) 3-phase 50/60 Hz 220V - 575V Current range 0 - 48A Cable type: SUBCAB 8AWG/4	*
112	51 726 06	Level regulator unit EU	Contacteur unit 50Hz 220V - 240V Float switch Not CSA approved	1
112,2	410 872	Flat pin sleeve		1
112,3	50 040 05	Insulating sleeve 0.5-6 MM2		1
112,4	50 221 01	End sleeve 1.5 MM2; L=7 MM		1

Pos. No	Part. No	Denomination	Qty/Version
			182
112,6	410 873	Cable lug UL/CSA 0.5-1.65 MM2	1
112,7	410 034	Closed end splice 3-6(AWG 12-10) L=18	1
112,8	410 774	Level switch	1
112,9	410 370	Plain washer	1
112,10	51 278 00	Bending protection	1
112,11	410 367	Gland screw	1
112	51 726 08	Level regulator unit EU	1
		Contactor unit 50Hz 380V - 400V Float switch Not CSA approved	
112,1	410 872	Flat pin sleeve	1
112,2	50 040 05	Insulating sleeve 0.5-6 MM2	1
112,3	50 221 01	End sleeve 1.5 MM2; L=7 MM	1
112,5	410 873	Cable lug UL/CSA 0.5-1.65 MM2	1
112,6	410 034	Closed end splice 3-6(AWG 12-10) L=18	1
112,7	410 370	Plain washer	1
112,8	50 176 00	Level switch	1
112,9	51 278 00	Bending protection	1
112,10	410 367	Gland screw	1
112	51 726 07	Level regulator unit US/CDN	1
		Contactor unit 60Hz 200V - 208V Float switch CSA approved	
112,2	410 872	Flat pin sleeve	1
112,3	50 040 05	Insulating sleeve 0.5-6 MM2	1
112,4	50 221 01	End sleeve 1.5 MM2; L=7 MM	1
112,6	410 873	Cable lug UL/CSA 0.5-1.65 MM2	1
112,7	410 034	Closed end splice 3-6(AWG 12-10) L=18	1
112,9	410 868	Level switch	1
112,10	410 370	Plain washer	1
112,11	51 278 00	Bending protection	1
112,12	410 367	Gland screw	1
112,13	50 892 14	Connection plate	1
112	51 726 07	Level regulator unit US/CDN	1
		Contactor unit 60Hz 220V - 240V Float switch CSA approved	

Pos. No	Part. No	Denomination	Qty/Version
			182
112,2	410 872	Flat pin sleeve	1
112,3	50 040 05	Insulating sleeve 0.5-6 MM2	1
112,4	50 221 01	End sleeve 1.5 MM2; L=7 MM	1
112,6	410 873	Cable lug UL/CSA 0.5-1.65 MM2	1
112,7	410 034	Closed end splice 3-6(AWG 12-10) L=18	1
112,9	410 868	Level switch	1
112,10	410 370	Plain washer	1
112,11	51 278 00	Bending protection	1
112,12	410 367	Gland screw	1
112,13	50 892 14	Connection plate	1
112	51 726 06	Level regulator unit EU	1
		Contactor unit 50Hz 415V - 440V Float switch with isolated input Not CSA approved	
112,2	410 872	Flat pin sleeve	1
112,3	50 040 05	Insulating sleeve 0.5-6 MM2	1
112,4	50 221 01	End sleeve 1.5 MM2; L=7 MM	1
112,6	410 873	Cable lug UL/CSA 0.5-1.65 MM2	1
112,7	410 034	Closed end splice 3-6(AWG 12-10) L=18	1
112,8	410 774	Level switch	1
112,9	410 370	Plain washer	1
112,10	51 278 00	Bending protection	1
112,11	410 367	Gland screw	1
112	51 726 06	Level regulator unit EU	1
		Contactor unit 50Hz 500V Float switch with isolated input. Contactor unit 50Hz 525V - 550V Float switch with isolated input	
112,2	410 872	Flat pin sleeve	1
112,3	50 040 05	Insulating sleeve 0.5-6 MM2	1
112,4	50 221 01	End sleeve 1.5 MM2; L=7 MM	1
112,6	410 873	Cable lug UL/CSA 0.5-1.65 MM2	1
112,7	410 034	Closed end splice 3-6(AWG 12-10) L=18	1

Pos. No	Part. No	Denomination	Qty/Version
			182
112,8	410 774	Level switch	1
112,9	410 370	Plain washer	1
112,10	51 278 00	Bending protection	1
112,11	410 367	Gland screw	1
112,10	51 278 00	Bending protection	1
112,2	410 872	Flat pin sleeve	1
112,3	50 040 05	Insulating sleeve 0.5-6 MM2	1
112,4	50 221 01	End sleeve 1.5 MM2; L=7 MM	1
112,6	410 873	Cable lug UL/CSA 0.5-1.65 MM2	1
112,7	410 034	Closed end splice 3-6(AWG 12-10) L=18	1
112,8	410 774	Level switch	1
112,9	410 370	Plain washer	1
112,11	410 367	Gland screw	1
112	51 726 07	Level regulator unit US/CDN	1
		Contactor unit 60Hz 380V - 400V Float switch with isolated input CSA approved	
112,2	410 872	Flat pin sleeve	1
112,3	50 040 05	Insulating sleeve 0.5-6 MM2	1
112,4	50 221 01	End sleeve 1.5 MM2; L=7 MM	1
112,6	410 873	Cable lug UL/CSA 0.5-1.65 MM2	1
112,7	410 034	Closed end splice 3-6(AWG 12-10) L=18	1
112,9	410 868	Level switch	1
112,10	410 370	Plain washer	1
112,11	51 278 00	Bending protection	1
112,12	410 367	Gland screw	1
112,13	50 892 14	Connection plate	1
112	51 726 07	Level regulator unit US/CDN	1
		Contactor unit 60Hz 440V - 480V Float switch with isolated input CSA approved	
112,2	410 872	Flat pin sleeve	1
112,3	50 040 05	Insulating sleeve 0.5-6 MM2	1
112,4	50 221 01	End sleeve 1.5 MM2; L=7 MM	1

Pos. No	Part. No	Denomination	Qty/Version
			182
112,6	410 873	Cable lug UL/CSA 0.5-1.65 MM2	1
112,7	410 034	Closed end splice 3-6(AWG 12-10) L=18	1
112,9	410 868	Level switch	1
112,10	410 370	Plain washer	1
112,11	51 278 00	Bending protection	1
112,12	410 367	Gland screw	1
112,13	50 892 14	Connection plate	1
112	51 726 07	Level regulator unit US/CDN	1
		Contactor unit	
112,2	410 872	Flat pin sleeve	1
112,3	50 040 05	Insulating sleeve 0.5-6 MM2	1
112,4	50 221 01	End sleeve 1.5 MM2; L=7 MM	1
112,6	410 873	Cable lug UL/CSA 0.5-1.65 MM2	1
112,7	410 034	Closed end splice 3-6(AWG 12-10) L=18	1
112,9	410 868	Level switch	1
112,10	410 370	Plain washer	1
112,11	51 278 00	Bending protection	1
112,12	410 367	Gland screw	1
112,13	50 892 14	Connection plate	1
113	51 749 00	Bracket	1
113	51 735 01	Sticker	2
		Starter (Phase shifter) 3- phase 50/60 Hz 220V - 575V Current range 0 - 22A Cable type: SUBCAB 4G4	
113	51 735 00	Sticker	1
		Starter (Phase shifter) 3- phase 50/60 Hz 380V - 415V Current range 0 - 22A Cable type: SUBCAB 4G4 Supply connection CEE 5- PLUG 32A	
114	410 010	Hex.socket hd screw M8X12-A2-70	1
114	51 735 01	Sticker	2
		Starter (Phase shifter) 3- phase 50/60 Hz 380V - 415V Current range 0 - 22A Cable type: SUBCAB 4G4 Supply connection CEE 5- PLUG 32A	
115	50 021 37	Hexagon nut M8-A4-70	1

Pos. No	Part. No	Denomination	Qty/Version	
			182	
120	410 197	Hexagon head screw M12X35-A2-70	2	
121	132 334	Plain washer (30)-32 MM	Power cable x 1 SUBCAB 4G2,5 12,5 - 13,5mm L= 20m	4
121	132 336	Plain washer (32)-34 MM	Power cable x 1 SUBCAB 7G2,5+2x1,5 20 - 22mm L= 20m	4
121	132 312	Plain washer (33)-35 MM	Power cable x 1 SUBCAB 4AWG/3-2-1-GC 32,8 - 34,8mm L= 16m	4
122	410 086	O-ring 49.5X3 NBR		1
123	50 020 04	Hex.socket hd screw M6X20-A4-70		2
124	410 153	Seal sleeve (12)-14 MM	Power cable x 1 SUBCAB 4G2,5 12,5 - 13,5mm L= 20m	2
124	410 112	Seal sleeve (14)-17 MM	Power cable x 1 SUBCAB 4G4 16 - 17mm L= 20m	2
124	410 113	Seal sleeve (17)-20 MM	Power cable x 1 SUBCAB 4G2,5+2x1,5 17 - 18mm L= 20m	2
124	410 114	Seal sleeve (20)-23 MM	Power cable x 1 SUBCAB 7G2,5+2x1,5 20 - 22mm L= 20m	2
124	410 115	Seal sleeve (23)-26 MM	Power cable x 1 SUBCAB 4G6+2x1,5 24 - 26mm L= 20m	2
124	410 116	Seal sleeve (26)-29 MM	Power cable x 1 SUBCAB 8AWG/3-2-1-GC 27,2 - 29,2mm L= 16m	2
124	410 117	Seal sleeve (29)-32 MM	Power cable x 1 SUBCAB 6AWG/3-2-1-GC 30 - 32mm L= 16m	2
124	410 118	Seal sleeve (32)-35 MM	Power cable x 1 SUBCAB 4AWG/3-2-1-GC 32,8 - 34,8mm L= 16m	2
125	131 039	Motor cable subcab	Power cable x 1 SUBCAB 4G2,5 12,5 - 13,5mm L= 20m	*
125	50 777 00	Motor cable subcab	Power cable x 1 SUBCAB 4G2,5+2x1,5 17 - 18mm L= 20m	*
125	410 063	Motor cable subcab	Power cable x 1 SUBCAB 7G2,5+2x1,5 20 - 22mm L= 20m	*
125	133 139	Motor cable subcab	Power cable x 1 SUBCAB 4G4 16 - 17mm L= 20m	*

Pos. No	Part. No	Denomination		Qty/Version
				182
125	410 129	Motor cable subcab	Power cable x 1 SUBCAB 4G4+2x1,5 20 - 22mm L= 20m	*
125	131 028	Motor cable subcab	Power cable x 1 SUBCAB 4G6 18 - 19mm L= 20m	*
125	410 126	Motor cable subcab	Power cable x 1 SUBCAB 4G6+2x1,5 24 - 26mm L= 20m	*
125	410 852	Motor cable subcab	Power cable x 1 SUBCAB 4G10+S(2x0,5) 24 - 26mm L= 20m	*
125	410 067	Motor cable subcab	Power cable x 1 SUBCAB 12AWG/4 17 - 18mm L= 16m	*
125	410 068	Motor cable subcab	Power cable x 1 SUBCAB 12AWG/7 22 - 20mm L= 16m	*
125	410 132	Motor cable subcab	Power cable x 1 SUBCAB 10AWG/4 18 - 19,7mm L= 16m	*
125	410 069	Motor cable	Power cable x 1 SUBCAB 10AWG/3-2-1-GC 20,3 - 22,3mm L= 16m	*
125	410 133	Motor cable subcab	Power cable x 1 SUBCAB 8AWG/4 24 - 26mm L= 16m	*
125	410 134	Motor cable	Power cable x 1 SUBCAB 8AWG/3-2-1-GC 27,2 - 29,2mm L= 16m	*
125	410 135	Motor cable	Power cable x 1 SUBCAB 6AWG/3-2-1-GC 30 - 32mm L= 16m	*
125	410 136	Motor cable	Power cable x 1 SUBCAB 4AWG/3-2-1-GC 32,8 - 34,8mm L= 16m	*
125	410 059	Motor cable	Power cable x 1 Screened 3x2,5 13,5 - 14,9mm L= 20m	*
125	410 060	Motor cable	Power cable x 1 Screened 6x2,5+2x1,5 18,1 - 19,9mm L= 20m	*
125	410 860	Motor cable subcab	Power cable x 1 SUBCAB S3x2,5+3x2,5/3+S(4x0,5) 18 - 20mm L= 20m	*
126	51 025 02	Ring		1
127	50 902 00	Earthing plate		1
128	51 033 04	Entrance flange		1
129	410 875	Cap 6X16 MM PVC	Power cable x 1 SUBCAB 4G10+S(2x0,5) 24 - 26mm L= 20m	1

Pos. No	Part. No	Denomination	Qty/Version	
			182	
129	410 874	Cap 5X10 MM PVC	Power cable x 1 SUBCAB S3x2,5+3x2,5/3+S(4x0,5) 18 - 20mm L= 20m	1
130	410 878	Cap 24X45 MM PVC	Power cable x 1 SUBCAB 4G10+S(2x0,5) 24 - 26mm L= 20m	1
130	410 629	Cap 18X25 MM PVC	Power cable x 1 SUBCAB S3x2,5+3x2,5/3+S(4x0,5) 18 - 20mm L= 20m	1
131	50 221 00	End sleeve 0.75 MM2; L=6 MM		2
132	410 881	Closed end splice 0.33-0.82(AWG 22-18) L=18		2
133	410 873	Cable lug UL/CSA 0.5-1.65 MM2		1
134	410 885	Tape		*
135	410 883	Insulating hose pvc D=3 MM		*
137	410 034	Closed end splice 3-6(AWG 12-10) L=18		2
138	410 054	Shrink hose ID=6.4 MM		*
139	410 884	Insulating hose pvc D=8 MM		*
140	410 011	Hexagon nut M12-A4-70		4
141	132 274	Plain washer 12-A2-A 170		4
142	132 274	Plain washer 12-A2-A 170		2
143	50 897 00	U-ring		1
144	50 944 00	Discharge connection	Discharge Connection DN 75 Hose 3" aluminium	1
144	50 944 01	Discharge connection	Discharge Connection DN 75 Thread : ISO G3A Outer aluminium	1
144	410 028	Coupling part DN 75 INNER THREAD G3	Discharge Connection DN 75 Thread : ISO G3A Outer Quick coupling: Storz aluminium	1
144	50 944 03	Discharge connection	Discharge Connection DN 75 Thread : Victaulic groove Outer aluminium	1
144	50 944 02	Discharge connection	Discharge Connection DN 75 Thread : NPT 3-8 Outer aluminium	1
144	50 919 00	Discharge connection	Discharge Connection DN 100 Hose 4" aluminium	1
144	50 919 01	Discharge connection	Discharge Connection DN 100 Thread : ISO G4A Outer aluminium	1

Pos. No	Part. No	Denomination	Qty/Version
			182
144	410 030	Coupling part DN 110 INNER THREAD G4	Discharge Connection DN 100 Thread : ISO G4A Outer Quick coupling: Storz aluminium 1
144	410 029	Coupling part	Discharge Connection DN 100 Thread : ISO G4A Outer Quick coupling: Storz diam=115 mm aluminium 1
144	50 919 03	Discharge connection	Discharge Connection DN 100 Thread : Victaulic groove Outer aluminium 1
144	50 919 02	Discharge connection	Discharge Connection DN 100 Thread : NPT 4-8 Outer aluminium 1
144	51 038 05	Discharge connection	Discharge Connection DN 150 Hose 6" aluminium 1
144	51 038 06	Discharge connection	Discharge Connection DN 150 Thread : ISO G6A Outer aluminium 1
144	410 099	Coupling part	Discharge Connection DN 150 Thread : ISO G6A Outer Quick coupling: Storz aluminium 1
144	51 038 09	Discharge connection	Discharge Connection DN 150 Thread : Victaulic groove Outer aluminium 1
144	51 038 08	Discharge connection	Discharge Connection DN 150 Thread : NPT 6-8 Outer aluminium 1
145	132 274	Plain washer 12-A2-A 170	6
800	51 775 00	O-ring kit	Contains all O-rings with position numbers in the exploded view. 1
801	51 080 00	Zinc anode kit	1
900	51 778 00	Basic repair kit	1
901	410 684	Plug contact	Plug Contact 3-phase 50 Hz 380V - 415V Supply connection CEE 4-PLUG 16A 1
901	410 685	Plug contact	Plug Contact 3-phase 50 Hz 380V - 415V Supply connection CEE 4-PLUG 32A 1
901	50 102 01	Phase shifter	Starter (Phase shifter) 3- phase 50/60 Hz 220V - 575V Current range 0 - 22A Cable type: SUBCAB 4G4 1
901	50 102 02	Phase shifter	Starter (Phase shifter) 3- phase 50/60 Hz 220V - 575V Current range 0 - 48A Cable type: SUBCAB 4G6 1

Pos. No	Part. No	Denomination	Qty/Version
			182
901	50 100 01	Plug contact	1
		Starter (Phase shifter) 3-phase 50/60 Hz 380V - 415V Current range 0 - 22A Cable type: SUBCAB 4G4 Supply connection CEE 5-PLUG 32A	
902	51 125 01	Adapter unit	1



AM - LASER UND BAUGERÄTE HANDELS GMBH

Adresse: Oberes Bahnhof 2
Telefon: (+43 2249) 28 495
e-mail: office@am-laser.at

A-2281 Raasdorf
Fax: (+43 2249) 28 495-20
web: www.am-laser.at / www.allround.cc



Verkauf ● Miete ● Service ● Reparatur