

Parts List

8103.181 Minor



Table of Contents

Introduction	2
Specially approved products.....	2
Product Description	3
The data plate.....	3
Parts	4
Exploded view.....	4
List of parts.....	5

Introduction

Purpose of this manual

The purpose of this manual is to provide necessary information on spare parts and accessories order.

Disclaimer

Always use genuine Grindex parts. The use of other spare parts or accessories can invalidate any claims for warranty or compensation. Grindex does not take any responsibility for damages that are caused by the use of non-original parts. For more information, contact your local sales and service representative.

Data for ordering spare parts

The following information is needed for spare part orders:

- Serial number of the product
- Part number
- Quantity of bulk material, see * in tables

Specially approved products

Qualification of personnel

Only Grindex or Grindex-authorized service personnel may undertake repair work on Ex-approved products.

Dimensional accuracy inspection

Spare parts marked with (Ex) after the part number are subject to dimensional accuracy inspection.

Product Description

Products included

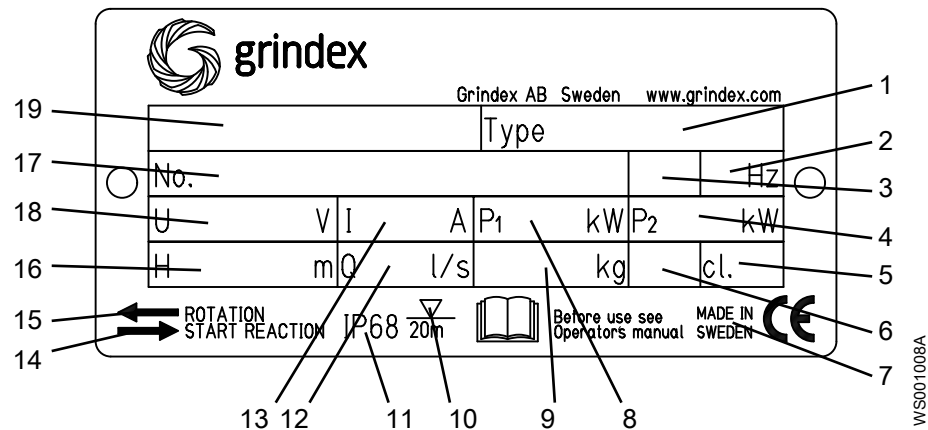
Pump model	Approvals
Minor 8103.181	Standard

The data plate

Introduction

The data plate is a metal label located on the main body of the pump. The data plate lists key product specifications.

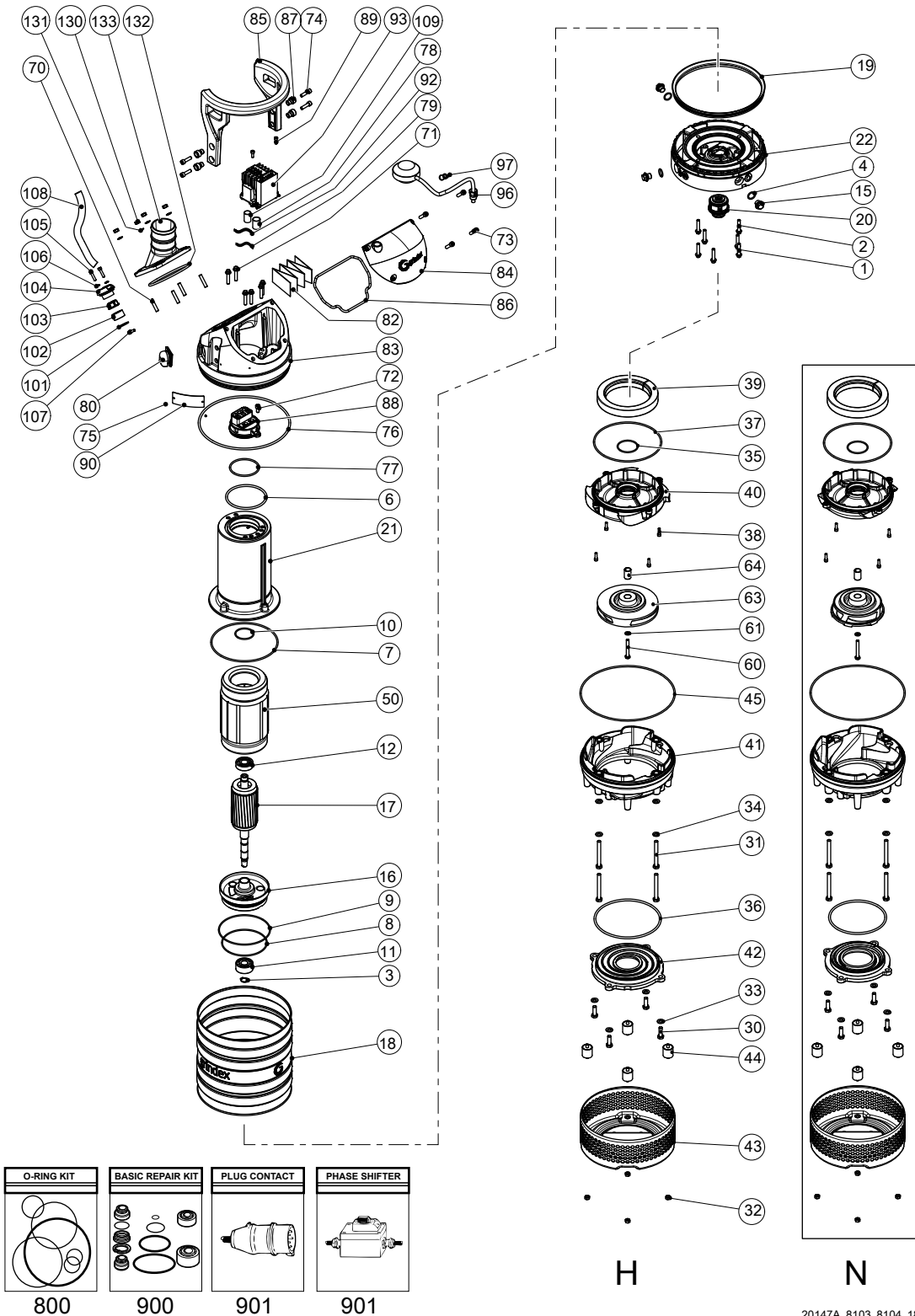
The data plate



1. Pump type number
2. Frequency
3. Phases, type of current
4. Rated shaft power
5. Thermal class
6. Locked rotor code-letter
7. Country of origin
8. Maximum power consumption
9. Product weight
10. Maximum submersion depth
11. Degree of protection
12. Maximum capacity
13. Rated current
14. Direction of the start reaction
15. Direction of the impeller rotation
16. Maximum head
17. Serial number
18. Rated voltage
19. Pump model

Parts

Exploded view



20147A_8103_8104_181_expl_view

List of parts

Table 1: 8103

Pos. No	Part. No	Denomination	Qty/Version
			181
1	410 533	Hexagon flange screw M8X40-A2-70	4
2	410 533	Hexagon flange screw M8X40-A2-70	3
3	50 278 02	Retaining ring SGA 20	1
4	410 487	O-ring 19.2X3 FPM	3
5	410 487	O-ring 19.2X3 FPM	6
6	410 882	O-ring 114.3X5.7 NBR	1
7	410 021	O-ring 192.0X4.0 NBR	1
8	410 018	O-ring 129.5X3 NBR	1
9	140 377	O-ring 144.5X3.0 NBR	1
10	410 023	O-ring 52.5X3.0 FPM	1
11	410 031	Ball bearing 20X52X22.2 MM	1
12	50 287 04	Ball bearing 20X52X15 MM	1
13	410 053	Oil ISO VG 32	*
15	133 063	Inspection screw	3
16	50 950 00	Bearing housing	1
17	50 903 02	Shaft unit	1
18	50 858 00	Cooling jacket	1
19	50 987 00	Seal ring	1
20	51 760 51	Mechanical seal	1
20,1	410 082	Retaining ring	1
21	51 750 00	Stator housing	1
22	50 951 01	Adapter	1
23	50 136 00	Instruction label	1
30	410 004	Hexagon head screw M10X30-A2-70	4
31	410 007	Hexagon head screw M10X90-A4-80	4
32	50 021 37	Hexagon nut M8-A4-70	4
33	50 022 26	Plain washer 10-A4-170	4
34	50 022 26	Plain washer 10-A4-170	4
35	410 083	O-ring 57.5X3.0 FPM	1
36	410 019	O-ring 159.3X5.7 NBR	N Mtrl: NBR
36	50 037 45	O-ring 184.3X5.7 NBR	H Mtrl: NBR
37	410 892	O-ring 192X4.0 FPM	1

Pos. No	Part. No	Denomination	Qty/Version
			181
38	50 020 04	Hex.socket hd screw M6X20-A4-70	4
39	410 041	Pressure equalizer L=510 MM	1
40	50 953 00	Seal housing cov.coa	N Mtrl: NBR 1
40	50 952 00	Seal housing cov.coa	H Mtrl: NBR 1
41	50 955 00	Diffuser coat.	N Mtrl: NBR 1
41	50 955 01	Diffuser	N Mtrl: Polyurethane rubber (PU) 1
41	50 954 00	Diffuser coat.	H Mtrl: NBR 1
41	50 954 01	Diffuser	H Mtrl: Polyurethane rubber (PU) 1
42	50 957 00	Suction cover	N Mtrl: NBR 1
42	50 956 00	Suction cover	H Mtrl: NBR 1
43	50 961 00	Strainer	1
44	50 962 00	Damper complete	4
45	410 888	O-ring 260X4 NBR	1
50	50 904 06	Stator 15-12-2b	Stator 3-phase 60Hz 200V-208V D Max ambient temp=40 DC 1
50	50 904 04	Stator 15-12-2b	Stator 3-phase 50Hz 220V-240V D Max ambient temp=40 DC 1
50	50 904 05	Stator 15-12-2b	Stator 3-phase 60Hz 220V-240V D Max ambient temp=40 DC 1
50	50 904 03	Stator 15-12-2b	Stator 3-phase 60Hz 220V-240V Y// Max ambient temp=40 DC 1
50	50 904 11	Stator 15-12-2b	Stator 3-phase 60Hz 220V-230V D// Max ambient temp=40 DC 1
50	50 904 00	Stator 15-12-2b	Stator 3-phase 50Hz 380V-400V D Max ambient temp=40 DC . Stator 3- phase 60Hz 440V-480V D Max ambient temp=40 DC 1
50	50 904 14	Stator 15-12-2b	Stator 3-leads 3-phase 50Hz 380V-400V Y Max ambient temp=40 DC. Stator 3-leads 3-phase 60Hz 440V-480V Y Max ambient temp=40 DC 1
50	50 904 02	Stator 15-12-2b	Stator 3-phase 60Hz 380V-400V D Max ambient temp=40 DC 1

Pos. No	Part. No	Denomination	Qty/Version	
			181	
50	50 904 01	Stator 15-12-2b	Stator 3-phase 50Hz 415V-440V D Max ambient temp=40 DC	1
50	50 904 07	Stator 15-12-2b	Stator 3-phase 50Hz 500V D Max ambient temp=40 DC . Stator 3-phase 60Hz 575V-600V D Max ambient temp=40 DC	1
50	50 904 15	Stator 15-12-2b	Stator 3-phase 50Hz 500V Y Max ambient temp=40 DC . Stator 3-phase 60Hz 575V-600V Y Max ambient temp=40 DC	1
50	50 904 08	Stator 15-12-2b	Stator 3-phase 50Hz 525V-550V D Max ambient temp=40 DC	1
50	50 904 09	Stator 15-12-2b	Stator 3-phase 50Hz 1000V Y Max ambient temp=40 DC	1
50	50 980 04	Stator 15-14-2b	Stator 3-phase 50Hz 220V-240V D Max ambient temp=40 DC *** Only for Hüdig ***	1
51	410 034	Closed end splice 3-6(AWG 12-10) L=18		1
60	410 006	Hexagon head screw M8X60-A4-80		1
61	50 021 38	Plain washer 8-A4-170		1
63	50 960 01	Impeller	N 50Hz 3-phase Max ambient temp=40 DC	1
63	50 960 02	Impeller	N 60Hz 3-phase Max ambient temp=40 DC	1
63	50 959 00	Impeller	H 50Hz 3-phase Max ambient temp=40 DC	1
63	50 958 01	Impeller	H 60Hz 3-phase Max ambient temp=40 DC	1
64	51 751 00	Sleeve unit		1
70	50 021 12	Stud M8X22		4
71	410 533	Hexagon flange screw M8X40-A2-70		6
72	140 050	Hex.socket hd screw M8X30-A2-70	Terminal board Max 750V CSA approved	1
72	140 049	Hex.socket hd screw M8X16-A2-70	Contacting unit 50Hz - 550V Not CSA approved	1
73	140 050	Hex.socket hd screw M8X30-A2-70		4
74	140 050	Hex.socket hd screw M8X30-A2-70		4

Pos. No	Part. No	Denomination	Qty/Version
			181
75	410 000	Drive screw 4X5-A2/A4	2
76	132 415	O-ring 259.3X5.7 NBR	1
77	410 623	O-ring 78X4 NBR	1
78	410 770	Insulating hose D=18 MM	*
80	50 869 00	Air release valve	1
81	50 826 01	Caution plate	1
82	51 672 00	Connection plate	1
83	51 753 00	Main cover	1
84	51 761 00	Cover	1
84	51 761 01	Cover For float switch	1
85	51 762 00	Handle	1
86	51 763 00	Gasket	1
87	51 765 00	Sleeve	4
88	51 764 01	Terminal plate unit 1-phase	1
88	51 764 00	Terminal plate unit 3-phase	1
89	410 889	Hex.socket hd screw M6X16-A2-70	2
90	50 888 00	Data plate Use 50 907 00 (EU), 50 907 01 (US) as spare part	1
91	50 992 00	Sticker R1 145-22 AHT +R1 205 AP	1
93	51 767 18	Starter unit Contactor unit 50Hz 220V - 240V Not CSA approved	1
93,1	51 768 00	Holder	1
93,4	51 511 07	Motor protector SMART	1
93,5	410 776	Contactor	1
93,6	410 008	Hex.socket hd screw M4X16-A2-70	2
93,7	410 012	Lock nut	2
93,8	410 008	Hex.socket hd screw M4X16-A2-70	2
93,9	410 012	Lock nut	2
93,12	51 713 02	Cable set	1
93,14	51 713 04	Cable set	1
93,16	51 713 06	Cable set	1
93,17	50 900 62	Single-core cable	1
93,18	50 509 00	Cable set	1
93	51 767 19	Starter unit Contactor unit 50Hz 380V - 400V Not CSA approved	1
93,1	51 768 00	Holder	1
93,4	51 511 05	Motor protector SMART	1

Pos. No	Part. No	Denomination	Qty/Version
			181
	93,5 410 812	Contactator	1
	93,6 410 008	Hex.socket hd screw M4X16-A2-70	2
	93,7 410 012	Lock nut	2
	93,8 410 008	Hex.socket hd screw M4X16-A2-70	2
	93,9 410 012	Lock nut	2
	93,12 51 713 02	Cable set	1
	93,14 51 713 04	Cable set	1
	93,16 51 713 06	Cable set	1
	93,17 50 900 62	Single-core cable	1
	93,18 50 509 00	Cable set	1
93	51 767 19	Starter unit	Contactator unit 50Hz 415V - 440V Not CSA approved
	93,1 51 768 00	Holder	1
	93,4 51 511 05	Motor protector SMART	1
	93,5 410 812	Contactator	1
	93,6 410 008	Hex.socket hd screw M4X16-A2-70	2
	93,7 410 012	Lock nut	2
	93,8 410 008	Hex.socket hd screw M4X16-A2-70	2
	93,9 410 012	Lock nut	2
	93,12 51 713 02	Cable set	1
	93,14 51 713 04	Cable set	1
	93,16 51 713 06	Cable set	1
	93,17 50 900 62	Single-core cable	1
	93,18 50 509 00	Cable set	1
93	51 767 20	Starter unit	Contactator unit 50Hz 500V Not CSA approved
	93,1 51 768 00	Holder	1
	93,4 51 511 05	Motor protector SMART	1
	93,5 410 812	Contactator	1
	93,6 410 008	Hex.socket hd screw M4X16-A2-70	2
	93,7 410 012	Lock nut	2
	93,8 410 008	Hex.socket hd screw M4X16-A2-70	2
	93,9 410 012	Lock nut	2
	93,12 51 713 02	Cable set	1
	93,14 51 713 04	Cable set	1

Pos. No	Part. No	Denomination	Qty/Version
			181
93,16	51 713 06	Cable set	1
93,17	50 900 62	Single-core cable	1
93,18	50 509 00	Cable set	1
93	51 767 25	Contactor unit Contactor unit 50Hz - 550V Not CSA approved	1
93,1	51 768 00	Holder	1
93,4	51 511 05	Motor protector SMART	1
93,5	410 891	Contactor	1
93,6	410 008	Hex.socket hd screw M4X16-A2-70	2
93,7	410 012	Lock nut	2
93,8	410 008	Hex.socket hd screw M4X16-A2-70	2
93,9	410 012	Lock nut	2
93,12	51 713 02	Cable set	1
93,14	51 713 04	Cable set	1
93,16	51 713 06	Cable set	1
93,17	50 900 62	Single-core cable	1
93,18	50 509 00	Cable set	1
93	51 767 26	Starter unit Contactor unit 60Hz 200V - 208V CSA approved	1
93,1	51 768 00	Holder	1
93,4	51 511 08	Motor protector SMART	1
93,5	410 776	Contactor	1
93,6	410 008	Hex.socket hd screw M4X16-A2-70	2
93,7	410 012	Lock nut	2
93,8	410 008	Hex.socket hd screw M4X16-A2-70	2
93,9	410 012	Lock nut	2
93,12	51 713 02	Cable set	1
93,14	51 713 04	Cable set	1
93,16	51 713 06	Cable set	1
93,17	50 900 62	Single-core cable	1
93,18	50 509 00	Cable set	1
93	51 767 26	Starter unit Contactor unit 60Hz 220V - 240V CSA approved	1
93,1	51 768 00	Holder	1
93,4	51 511 08	Motor protector SMART	1
93,5	410 776	Contactor	1

Pos. No	Part. No	Denomination	Qty/Version
			181
93,6	410 008	Hex.socket hd screw M4X16-A2-70	2
93,7	410 012	Lock nut	2
93,8	410 008	Hex.socket hd screw M4X16-A2-70	2
93,9	410 012	Lock nut	2
93,12	51 713 02	Cable set	1
93,14	51 713 04	Cable set	1
93,16	51 713 06	Cable set	1
93,17	50 900 62	Single-core cable	1
93,18	50 509 00	Cable set	1
93	51 767 27	Starter unit	1
		Contactor unit 60Hz 380V - 400V CSA approved	
93,1	51 768 00	Holder	1
93,4	51 511 06	Motor protector SMART	1
93,5	410 812	Contactor	1
93,6	410 008	Hex.socket hd screw M4X16-A2-70	2
93,7	410 012	Lock nut	2
93,8	410 008	Hex.socket hd screw M4X16-A2-70	2
93,9	410 012	Lock nut	2
93,12	51 713 02	Cable set	1
93,14	51 713 04	Cable set	1
93,16	51 713 06	Cable set	1
93,17	50 900 62	Single-core cable	1
93,18	50 509 00	Cable set	1
93	51 767 27	Starter unit	1
		Contactor unit 60Hz 440V - 480V CSA approved	
93,1	51 768 00	Holder	1
93,4	51 511 06	Motor protector SMART	1
93,5	410 812	Contactor	1
93,6	410 008	Hex.socket hd screw M4X16-A2-70	2
93,7	410 012	Lock nut	2
93,8	410 008	Hex.socket hd screw M4X16-A2-70	2
93,9	410 012	Lock nut	2
93,12	51 713 02	Cable set	1
93,14	51 713 04	Cable set	1
93,16	51 713 06	Cable set	1

Pos. No	Part. No	Denomination	Qty/Version
			181
93,17	50 900 62	Single-core cable	1
93,18	50 509 00	Cable set	1
93	51 767 28	Starter unit Contactor unit 60Hz 575V - 600V CSA approved	1
93,1	51 768 00	Holder	1
93,4	51 511 06	Motor protector SMART	1
93,5	410 891	Contactor	1
93,6	410 008	Hex.socket hd screw M4X16-A2-70	2
93,7	410 012	Lock nut	2
93,8	410 008	Hex.socket hd screw M4X16-A2-70	2
93,9	410 012	Lock nut	2
93,12	51 713 02	Cable set	1
93,14	51 713 04	Cable set	1
93,16	51 713 06	Cable set	1
93,17	50 900 62	Single-core cable	1
93,18	50 509 00	Cable set	1
93	51 767 27	Starter unit Contactor unit 60Hz 380V - 400V Not CSA approved	1
93,1	51 768 00	Holder	1
93,4	51 511 06	Motor protector SMART	1
93,5	410 812	Contactor	1
93,6	410 008	Hex.socket hd screw M4X16-A2-70	2
93,7	410 012	Lock nut	2
93,8	410 008	Hex.socket hd screw M4X16-A2-70	2
93,9	410 012	Lock nut	2
93,12	51 713 02	Cable set	1
93,14	51 713 04	Cable set	1
93,16	51 713 06	Cable set	1
93,17	50 900 62	Single-core cable	1
93,18	50 509 00	Cable set	1
93	51 767 18	Starter unit Contactor unit 50Hz 220V - 240V Float switch Not CSA approved	1
93,1	51 768 00	Holder	1
93,4	51 511 07	Motor protector SMART	1
93,5	410 776	Contactor	1
93,6	410 008	Hex.socket hd screw M4X16-A2-70	2

Pos. No	Part. No	Denomination	Qty/Version
			181
93,7	410 012	Lock nut	2
93,8	410 008	Hex.socket hd screw M4X16-A2-70	2
93,9	410 012	Lock nut	2
93,12	51 713 02	Cable set	1
93,14	51 713 04	Cable set	1
93,16	51 713 06	Cable set	1
93,17	50 900 62	Single-core cable	1
93,18	50 509 00	Cable set	1
93	51 767 19	Starter unit	1
		Contactor unit 50Hz 380V - 400V Float switch Not CSA approved	
93,1	51 768 00	Holder	1
93,4	51 511 05	Motor protector SMART	1
93,5	410 812	Contactor	1
93,6	410 008	Hex.socket hd screw M4X16-A2-70	2
93,7	410 012	Lock nut	2
93,8	410 008	Hex.socket hd screw M4X16-A2-70	2
93,9	410 012	Lock nut	2
93,12	51 713 02	Cable set	1
93,14	51 713 04	Cable set	1
93,16	51 713 06	Cable set	1
93,17	50 900 62	Single-core cable	1
93,18	50 509 00	Cable set	1
93	51 767 23	Starter unit	1
		Contactor unit 50Hz 380V - 400V Float switch with isolated input	
93,1	51 768 00	Holder	1
93,4	51 511 05	Motor protector SMART	1
93,5	410 812	Contactor	1
93,6	410 008	Hex.socket hd screw M4X16-A2-70	2
93,7	410 012	Lock nut	2
93,8	410 008	Hex.socket hd screw M4X16-A2-70	2
93,9	410 012	Lock nut	2
93,14	51 713 04	Cable set	1
93,16	51 713 06	Cable set	1
93,17	50 900 62	Single-core cable	1
93,18	50 509 00	Cable set	1

Pos. No	Part. No	Denomination	Qty/Version
			181
93,20	51 779 00	Supervision relay	1
93,21	50 457 00	Cable tie	1
93	51 767 23	Starter unit Contactor unit 50Hz 415V - 440V Float switch with isolated input Not CSA approved	1
93,1	51 768 00	Holder	1
93,4	51 511 05	Motor protector SMART	1
93,5	410 812	Contactor	1
93,6	410 008	Hex.socket hd screw M4X16-A2-70	2
93,7	410 012	Lock nut	2
93,8	410 008	Hex.socket hd screw M4X16-A2-70	2
93,9	410 012	Lock nut	2
93,14	51 713 04	Cable set	1
93,16	51 713 06	Cable set	1
93,17	50 900 62	Single-core cable	1
93,18	50 509 00	Cable set	1
93,20	51 779 00	Supervision relay	1
93,21	50 457 00	Cable tie	1
93	51 767 24	Starter unit Contactor unit 50Hz 500V Float switch with isolated input	1
93,1	51 768 00	Holder	1
93,4	51 511 05	Motor protector SMART	1
93,5	410 812	Contactor	1
93,6	410 008	Hex.socket hd screw M4X16-A2-70	2
93,7	410 012	Lock nut	2
93,8	410 008	Hex.socket hd screw M4X16-A2-70	2
93,9	410 012	Lock nut	2
93,14	51 713 04	Cable set	1
93,16	51 713 06	Cable set	1
93,17	50 900 62	Single-core cable	1
93,18	50 509 00	Cable set	1
93,20	51 779 00	Supervision relay	1
93,21	50 457 00	Cable tie	1
93	51 767 22	Contactor unit Contactor unit 50Hz 525V - 550V Float switch with isolated input	1

Pos. No	Part. No	Denomination	Qty/Version
			181
93,1	51 768 00	Holder	1
93,4	51 511 05	Motor protector SMART	1
93,5	410 891	Contactor	1
93,6	410 008	Hex.socket hd screw M4X16-A2-70	2
93,7	410 012	Lock nut	2
93,8	410 008	Hex.socket hd screw M4X16-A2-70	2
93,9	410 012	Lock nut	2
93,14	51 713 04	Cable set	1
93,16	51 713 06	Cable set	1
93,17	50 900 62	Single-core cable	1
93,18	50 509 00	Cable set	1
93,20	51 779 00	Supervision relay	1
93,21	50 457 00	Cable tie	1
93	51 767 30	Starter unit	1
		Contactor unit 60Hz 440V - 480V Float switch with isolated input CSA approved	
93,1	51 768 00	Holder	1
93,4	51 511 06	Motor protector SMART	1
93,5	410 812	Contactor	1
93,6	410 008	Hex.socket hd screw M4X16-A2-70	2
93,7	410 012	Lock nut	2
93,8	410 008	Hex.socket hd screw M4X16-A2-70	2
93,9	410 012	Lock nut	2
93,12	51 713 02	Cable set	1
93,14	51 713 04	Cable set	1
93,16	51 713 06	Cable set	1
93,17	50 900 62	Single-core cable	1
93,18	50 509 00	Cable set	1
93,20	51 779 00	Supervision relay	1
93,21	50 457 00	Cable tie	1
93	51 767 31	Starter unit	1
		Contactor unit 60Hz 575V Float switch with isolated input CSA approved	
93,1	51 768 00	Holder	1
93,4	51 511 06	Motor protector SMART	1
93,5	410 891	Contactor	1

Pos. No	Part. No	Denomination	Qty/Version
			181
93,6	410 008	Hex.socket hd screw M4X16-A2-70	2
93,7	410 012	Lock nut	2
93,8	410 008	Hex.socket hd screw M4X16-A2-70	2
93,9	410 012	Lock nut	2
93,12	51 713 02	Cable set	1
93,14	51 713 04	Cable set	1
93,16	51 713 06	Cable set	1
93,17	50 900 62	Single-core cable	1
93,18	50 509 00	Cable set	1
93,20	51 779 00	Supervision relay	1
93,21	50 457 00	Cable tie	1
96	51 726 03	Level regulator unit EU	1
		Contactor unit 50Hz 220V - 240V Float switch Not CSA approved	
96,1	410 840	Contact pin	1
96,2	410 839	Socket contact	1
96,3	410 873	Cable lug UL/CSA 0.5-1.65 MM2	1
96,4	410 842	Insulating sleeve	1
96,5	410 843	Insulating sleeve 1,5 - 2,5 MM2	1
96,6	410 774	Level switch	1
96,7	410 370	Plain washer	1
96,8	51 278 00	Bending protection	1
96,9	410 367	Gland screw	1
96	51 726 04	Level regulator unit EU	1
		Contactor unit 50Hz 380V - 400V Float switch Not CSA approved	
96,1	410 840	Contact pin	1
96,2	410 839	Socket contact	1
96,3	410 873	Cable lug UL/CSA 0.5-1.65 MM2	1
96,4	410 842	Insulating sleeve	1
96,5	410 843	Insulating sleeve 1,5 - 2,5 MM2	1
96,6	410 370	Plain washer	1
96,7	50 176 00	Level switch	1
96,8	51 278 00	Bending protection	1
96,9	410 367	Gland screw	1

Pos. No	Part. No	Denomination	Qty/Version
			181
96	51 726 03	Level regulator unit EU Contactor unit 50Hz 380V - 400V Float switch with isolated input	1
96,1	410 840	Contact pin	1
96,2	410 839	Socket contact	1
96,3	410 873	Cable lug UL/CSA 0.5-1.65 MM2	1
96,4	410 842	Insulating sleeve	1
96,5	410 843	Insulating sleeve 1,5 - 2,5 MM2	1
96,6	410 774	Level switch	1
96,7	410 370	Plain washer	1
96,8	51 278 00	Bending protection	1
96,9	410 367	Gland screw	1
96	51 726 03	Level regulator unit EU Contactor unit 50Hz 415V - 440V Float switch with isolated input Not CSA approved	1
96,1	410 840	Contact pin	1
96,2	410 839	Socket contact	1
96,3	410 873	Cable lug UL/CSA 0.5-1.65 MM2	1
96,4	410 842	Insulating sleeve	1
96,5	410 843	Insulating sleeve 1,5 - 2,5 MM2	1
96,6	410 774	Level switch	1
96,7	410 370	Plain washer	1
96,8	51 278 00	Bending protection	1
96,9	410 367	Gland screw	1
96	51 726 03	Level regulator unit EU Contactor unit 50Hz 500V Float switch with isolated input	1
96,1	410 840	Contact pin	1
96,2	410 839	Socket contact	1
96,3	410 873	Cable lug UL/CSA 0.5-1.65 MM2	1
96,4	410 842	Insulating sleeve	1
96,5	410 843	Insulating sleeve 1,5 - 2,5 MM2	1
96,6	410 774	Level switch	1
96,7	410 370	Plain washer	1
96,8	51 278 00	Bending protection	1
96,9	410 367	Gland screw	1

Pos. No	Part. No	Denomination	Qty/Version
			181
96	51 726 03	Level regulator unit EU	Contactor unit 50Hz 525V - 550V Float switch with isolated input
	96,1 410 840	Contact pin	1
	96,2 410 839	Socket contact	1
	96,3 410 873	Cable lug UL/CSA 0.5-1.65 MM2	1
	96,4 410 842	Insulating sleeve	1
	96,5 410 843	Insulating sleeve 1,5 - 2,5 MM2	1
	96,6 410 774	Level switch	1
	96,7 410 370	Plain washer	1
	96,8 51 278 00	Bending protection	1
	96,9 410 367	Gland screw	1
96	51 724 05	Level regulator unit US/CDN	Contactor unit 60Hz 440V - 480V Float switch with isolated input CSA approved
	96,1 410 840	Contact pin	1
	96,2 410 839	Socket contact	1
	96,3 410 873	Cable lug UL/CSA 0.5-1.65 MM2	1
	96,4 410 842	Insulating sleeve	1
	96,5 410 843	Insulating sleeve 1,5 - 2,5 MM2	1
	96,6 410 868	Level switch	1
	96,7 410 370	Plain washer	1
	96,8 51 278 00	Bending protection	1
	96,9 410 367	Gland screw	1
96	51 724 05	Level regulator unit US/CDN	Contactor unit 60Hz 575V Float switch with isolated input CSA approved
	96,1 410 840	Contact pin	1
	96,2 410 839	Socket contact	1
	96,3 410 873	Cable lug UL/CSA 0.5-1.65 MM2	1
	96,4 410 842	Insulating sleeve	1
	96,5 410 843	Insulating sleeve 1,5 - 2,5 MM2	1
	96,6 410 868	Level switch	1
	96,7 410 370	Plain washer	1
	96,8 51 278 00	Bending protection	1
	96,9 410 367	Gland screw	1

Pos. No	Part. No	Denomination	Qty/Version
			181
97	410 077	Cable clamp STAINLESS STEEL, CR	1
101	50 127 04	Plain washer (10)-22 MM	1
102	410 727	Seal sleeve (10)-12 MM	Power cable SUBCAB 4G1,5 10,5 - 11,5mm L= 20m
102	410 728	Seal sleeve (12)-14 MM	Power cable x 1 SUBCAB 4G2,5 12,5 - 13,5mm L= 20m
102	410 729	Seal sleeve (14)-16 MM	Power cable SUBCAB 4G1,5+2x1,5 16 - 17mm L= 20m
102	410 730	Seal sleeve (16)-18 MM	Power cable x 1 SUBCAB 4G2,5+2x1,5 17 - 18mm L= 20m
102	410 731	Seal sleeve (18)-20 MM	Power cable x 1 SUBCAB 4AWG/3-2-1-GC 32,8 - 34,8mm L= 16m
102	410 732	Seal sleeve (20)-22 MM	Power cable x 1 SUBCAB 12AWG/4 17 - 18mm L= 16m
102	410 733	Seal sleeve (22)-24 MM	Power cable x 1 SUBCAB 12AWG/4 17 - 18mm L= 16m
103	50 926 00	Cable clip (10)-12 MM	Power cable SUBCAB 4G1,5 10,5 - 11,5mm L= 20m
103	50 926 01	Cable clip (12)-14 MM	Power cable x 1 SUBCAB 4G2,5 12,5 - 13,5mm L= 20m
103	50 926 02	Cable clip (14)-16 MM	Power cable SUBCAB 4G1,5+2x1,5 16 - 17mm L= 20m
103	50 926 04	Cable clip (18)-20 MM	Power cable x 1 SUBCAB 4AWG/3-2-1-GC 32,8 - 34,8mm L= 16m
103	50 926 03	Cable clip (16)-18 MM	Power cable x 1 SUBCAB 4G2,5+2x1,5 17 - 18mm L= 20m
103	50 926 05	Cable clip (20)-22 MM	Power cable x 1 SUBCAB 12AWG/4 17 - 18mm L= 16m
104	50 932 00	Entrance flange	1
105	410 534	Hex.socket hd screw M6X25-A2-70	2
106	410 013	Plain washer 6-A4-170	2
107	410 889	Hex.socket hd screw M6X16-A2-70	1
108	51 714 05	Motor cable unit	Power cable SUBCAB 4G1,5 10,5 - 11,5mm L= 20m

Pos. No	Part. No	Denomination		Qty/Version
				181
108	51 714 10	Motor cable unit	Power cable SUBCAB 4G1,5+2x1,5 16 - 17mm L= 20m	1
108	51 714 06	Motor cable unit	Power cable x 1 SUBCAB 4G2,5 12,5 - 13,5mm L= 20m	1
108	51 714 11	Motor cable unit	Power cable x 1 SUBCAB 4G2,5+2x1,5 17 - 18mm L= 20m	1
108	51 714 07	Motor cable unit	Power cable x 1 SUBCAB 14AWG/4 14,2 - 15,2mm L= 16m	1
108	51 714 08	Motor cable unit	Power cable x 1 SUBCAB 14AWG/7 18 - 20mm L= 16m	1
108	51 714 13	Motor cable unit	Power cable x 1 SUBCAB 12AWG/4 17 - 18mm L= 16m	1
108	51 714 14	Motor cable unit	Power cable x 1 SUBCAB 10AWG/3-2-1-GC 20,30 - 22,30mm L= 16m	1
108	51 714 12	Motor cable unit	Power cable x 1 SUBCAB 4AWG/3-2-1-GC 32,8 - 34,8mm L= 16m	1
108	51 714 21	Motor cable unit	Power cable x 1 Screened 3x2,5 13,5 - 14,9mm L= 20m	1
109	410 056	Insulating hose D=14 MM	Power cable SUBCAB 4G1,5 10,5 - 11,5mm L= 20m	*
109	132 354	Insulating hose D=20 MM	Power cable x 1 SUBCAB 4G2,5+2x1,5 17 - 18mm L= 20m	*
121	51 735 00	Sticker		1
122	51 735 01	Sticker		1
123	131 039	Motor cable subcab	Starter (Phase shifter) 3- phase 50/60 Hz 220V - 575V Current range 0 - 16A Cable type: SUBCAB 4G2,5	*
123	410 065	Motor cable subcab	Starter (Phase shifter) 3- phase 50/60 Hz 220V - 575V Current range 0 - 16A Cable type: SUBCAB 14AWG/4	*
123	133 139	Motor cable subcab	Starter (Phase shifter) 3- phase 50/60 Hz 220V - 575V Current range 0 - 22A Cable type: SUBCAB 4G4	*

Pos. No	Part. No	Denomination	Qty/Version
			181
123	410 067	Motor cable subcab	Starter (Phase shifter) 3-phase 50/60 Hz 220V - 575V Current range 0 - 22A Cable type: SUBCAB 12AWG/4
124	50 102 00	Phase shifter	*
125	51 735 01	Sticker	1
130	50 021 37	Hexagon nut M8-A4-70	2
131	132 289	Plain washer 8-A2-A-170	4
132	410 890	O-ring 129.3X5.7 NBR	4
133	51 771 00	Discharge connection	Discharge Connection DN 75 Hose 3" aluminium
133	51 771 01	Discharge connection	Discharge Connection DN 75 Thread : ISO G3A Outer aluminium
133	51 771 03	Discharge connection	Discharge Connection DN 75 Thread : Victaulic groove Outer aluminium
133	51 771 02	Discharge connection	Discharge Connection DN 75 Thread : NPT 3-8 Outer aluminium
133	51 772 00	Discharge connection	Discharge Connection DN 100 Hose 4" aluminium
133	51 772 01	Discharge connection	Discharge Connection DN 100 Thread : ISO G4A Outer aluminium
133	51 772 03	Discharge connection	Discharge Connection DN 100 Thread : Victaulic groove Outer aluminium
133	51 772 02	Discharge connection	Discharge Connection DN 100 Thread : NPT 4-8 Outer aluminium
134	410 028	Coupling part	Discharge Connection DN 75 Thread : ISO G3A Outer Quick coupling: Storz aluminium
134	410 030	Coupling part	Discharge Connection DN 100 Thread : ISO G4A Outer Quick coupling: Storz aluminium
134	410 029	Coupling part	Discharge Connection DN 100 Thread : ISO G4A Outer Quick coupling: Storz diam=115 mm aluminium
800	51 774 00	O-ring kit	Contains all O-rings with position numbers in the exploded view.
801	51 079 00	Zinc anode kit	1
900	51 072 00	Basic repair kit	1

Pos. No	Part. No	Denomination	Qty/Version
			181
900,1	410 031	Ball bearing 20X52X22.2 MM	1
900,2	50 287 04	Ball bearing 20X52X15 MM	1
900,3	410 041	Pressure equalizer L=510 MM	1
900,4	50 901 23	Mechanical seal	1
900,5	51 066 00	O-ring kits	1
901	50 100 00	Plug contact	Plug Contact 3-phase 50 Hz 200V - 208V Supply connection CEE 5-PLUG 16A
901	50 100 01	Plug contact	Plug Contact 3-phase 50 Hz 380V - 415V Supply connection CEE 5-PLUG 32A
901	50 102 00	Phase shifter	Starter (Phase shifter) 3- phase 50/60 Hz 220V - 575V Current range 0 - 16A Cable type: SUBCAB 4G2,5
901	50 102 01	Phase shifter	Starter (Phase shifter) 3- phase 50/60 Hz 220V - 575V Current range 0 - 22A Cable type: SUBCAB 4G4
902	51 125 00	Adapter unit	1
903	51 170 00	Low-suction cuff	1



grindex

www.grindex.com

AM - LASER UND BAUGERÄTE HANDELS GMBH

Adresse: Oberes Bahnhof 2
Telefon: (+43 2249) 28 495
e-mail: office@am-laser.at

A-2281 Raasdorf
Fax: (+43 2249) 28 495-20
web: www.am-laser.at / www.allround.cc



Verkauf ● Miete ● Service ● Reparatur