

Parts List

8101.160 Minex 1~

8101.172 Minex Lite, Minex 3~



Table of Contents

Introduction	2
Specially approved products.....	2
Product Description	3
The data plate.....	3
Parts	4
Exploded view.....	4
List of parts.....	5

Introduction

Purpose of this manual

The purpose of this manual is to provide necessary information on spare parts and accessories order.

Disclaimer

Always use genuine Grindex parts. The use of other spare parts or accessories can invalidate any claims for warranty or compensation. Grindex does not take any responsibility for damages that are caused by the use of non-original parts. For more information, contact your local sales and service representative.

Data for ordering spare parts

The following information is needed for spare part orders:

- Serial number of the product
- Part number
- Quantity of bulk material, see * in tables

Specially approved products

Qualification of personnel

Only Grindex or Grindex-authorized service personnel may undertake repair work on Ex-approved products.

Dimensional accuracy inspection

Spare parts marked with (Ex) after the part number are subject to dimensional accuracy inspection.

Product Description

Products included

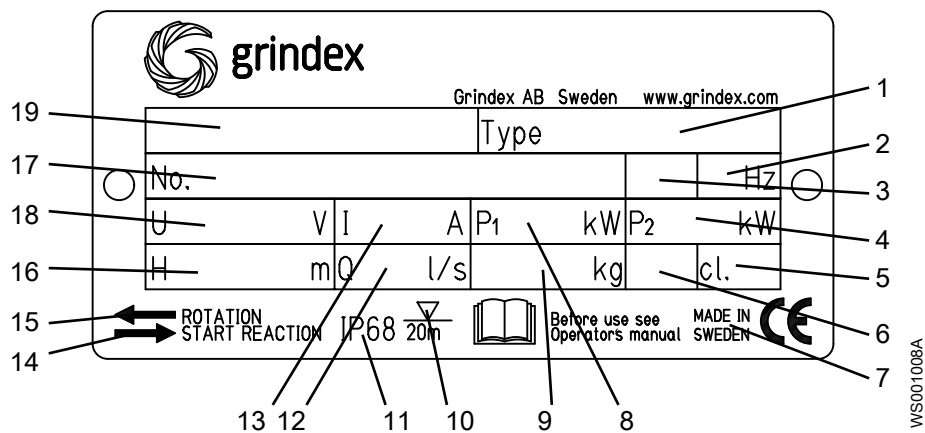
Pump model	Approvals
Minex 8101.160 Minex 8101.172	Standard

The data plate

Introduction

The data plate is a metal label located on the main body of the pump. The data plate lists key product specifications.

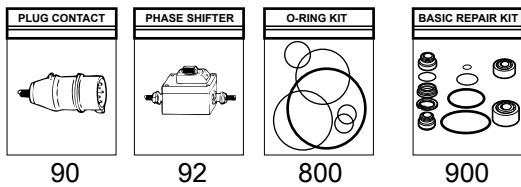
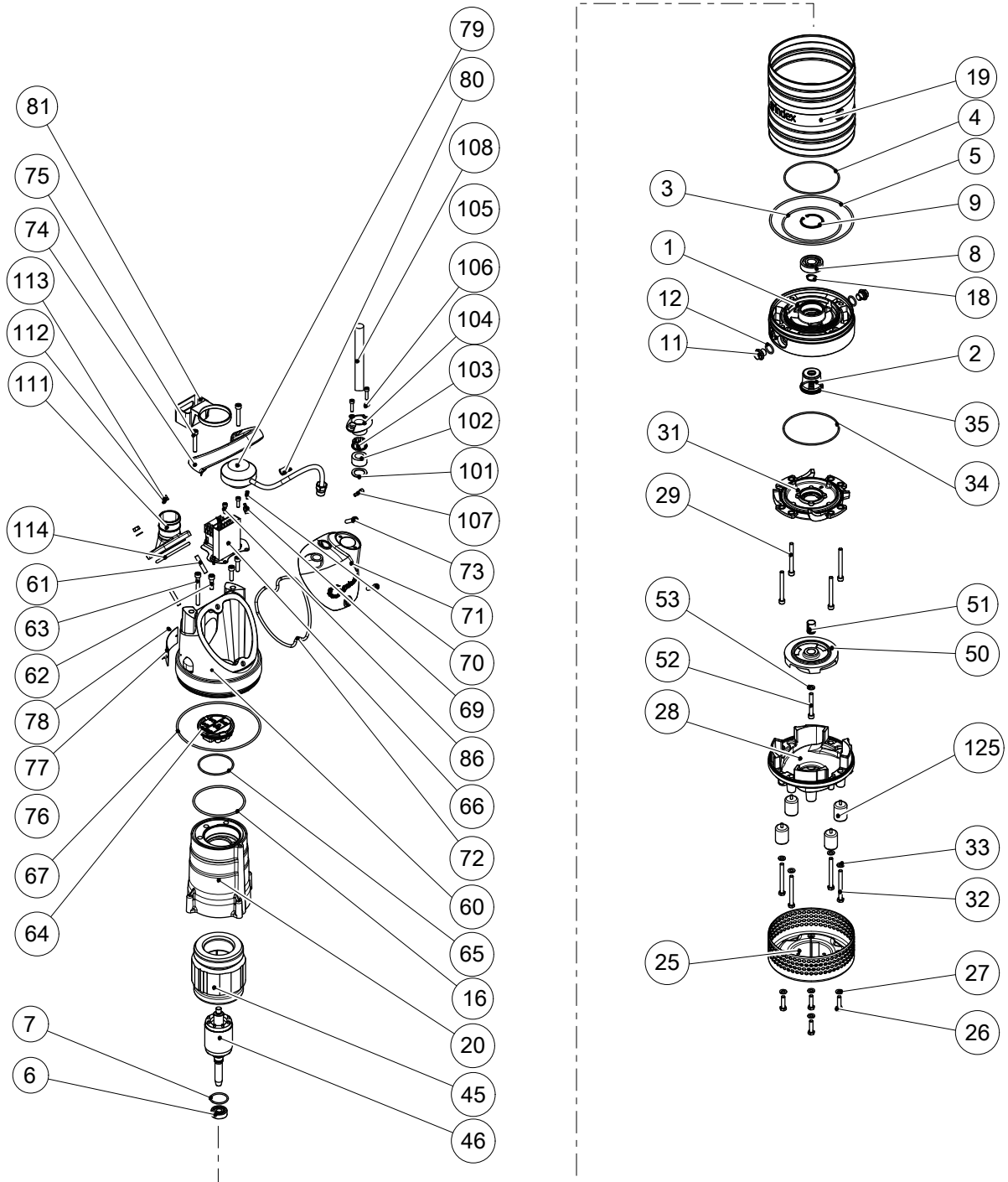
The data plate



1. Pump type number
2. Frequency
3. Phases, type of current
4. Rated shaft power
5. Thermal class
6. Locked rotor code-letter
7. Country of origin
8. Maximum power consumption
9. Product weight
10. Maximum submersion depth
11. Degree of protection
12. Maximum capacity
13. Rated current
14. Direction of the start reaction
15. Direction of the impeller rotation
16. Maximum head
17. Serial number
18. Rated voltage
19. Pump model

Parts

Exploded view



20124A_8101_160_172_expl_view

List of parts

Table 1: 8101

Pos. No	Part. No	Denomination	Qty/Version	
			160	172
1	51 707 00	Intermediate piece	1	1
2	51 728 50	Mechanical seal	1	1
3	410 020	O-ring 127.0X4.0 NBR	1	1
4	50 037 01	O-ring 119.5X3 NBR	1	1
5	410 832	O-ring 185X4 NBR	1	1
6	50 287 03	Ball bearing 12X37X12 MM	1	1
7	50 037 63	O-ring 36.2X3.0 FPM	1	1
8	50 287 04	Ball bearing 20X52X15 MM	1	1
9	410 834	Retaining ring	1	1
11	133 063	Inspection screw	2	2
12	133 064	O-ring 19.2X3 NBR	2	2
13	133 064	O-ring 19.2X3 NBR	4	4
14	410 053	Oil ISO VG 32	*	*
16	50 772 84	O-ring 114X4.0 NBR	1	1
17	50 992 00	Sticker R1 145-22 AHT +R1 205 AP	1	1
18	50 278 02	Retaining ring SGA 20	1	1
19	51 719 00	Outer casing	1	
19	51 719 01	Outer casing		1
20	51 681 02	Stator housing	1	
20	51 682 00	Stator housing		1
25	51 717 00	Strainer	1	1
26	410 002	Hexagon head screw M8X30-A4-70	4	4
27	50 021 38	Plain washer 8-A4-170	4	4
28	51 701 00	Diffuser	1	1
28	51 701 01	Diffuser	1	1
29	410 830	Hexagon head screw M8X80-A2-70	4	4
31	51 705 00	Seal housing cover	1	1
32	410 831	Hex.socket hd screw M8X80-A2-70	4	4
33	50 021 38	Plain washer 8-A4-170	4	4
34	50 037 01	O-ring 119.5X3 NBR	1	1
35	50 037 61	O-ring 44.2X3 NBR	1	1

Pos. No	Part. No	Denomination	Qty/Version	
			160	172
45	50 913 00	Stator 13-10-2b	1	
45	50 913 02	Stator 13-10-2b	1	
45	50 933 00	Stator 13-06-2b		1
45	50 933 03	Stator 13-06-2b		1
45	50 933 02	Stator 13-06-2b		1
45	50 933 07	Stator 13-06-2b		1
45	50 933 08	Stator 13-06-2b		1
45	50 933 10	Stator 13-06-2b		1
45	50 933 09	Stator 13-06-2b		1
45	50 934 03	Stator 13-06-2b		1
45	50 934 01	Stator 13-06-2b		1
45	50 934 02	Stator 13-06-2b		1
45	50 934 00	Stator 13-06-2b		1
46	51 724 00	Shaft unit	1	
46	51 724 01	Shaft unit		1
50	51 694 00	Impeller	1	
50	51 695 00	Impeller	1	

Pos. No	Part. No	Denomination	Qty/Version	
			160	172
50	51 695 00	Impeller		1
50	51 694 00	Impeller		1
50	51 695 03	Impeller		1
51	51 721 00	Sleeve unit	1	1
52	410 006	Hexagon head screw M8X60-A4-80	1	1
53	50 021 38	Plain washer 8-A4-170	1	1
60	51 782 00	Cover	1	1
60,1	51 780 00	Air release valve	2	2
61	410 689	Stud M8X45-A2-70	2	2
62	140 050	Hex.socket hd screw M8X30-A2-70	3	3
63	410 830	Hex.socket hd screw M8X80-A2-70	1	1
64	51 711 01	Terminal plate unit	1-phase	1
64	51 711 00	Terminal plate unit	3-phase	1
65	50 037 58	O-ring 74.5X3.0 NBR	1	1
66	51 712 13	Starter unit	Contactor unit 50Hz 110V - 115V 1-phase	1
66,1	51 716 00	Holder	1	
66,5	410 776	Contactor	1	
66,8	410 008	Hex.socket hd screw M4X16-A2-70	2	
66,9	410 012	Lock nut	2	
66,13	51 713 03	Cable set	1	
66,14	51 713 04	Cable set	1	
66,15	50 900 03	Electric cable AWG 16;L=70MM CSA	1	
66,16	51 713 06	Cable set	1	
66	51 712 13	Starter unit	Contactor unit 60Hz - 115V 1-phase CSA approved	1
66,1	51 716 00	Holder	1	
66,5	410 776	Contactor	1	
66,8	410 008	Hex.socket hd screw M4X16-A2-70	2	
66,9	410 012	Lock nut	2	
66,13	51 713 03	Cable set	1	
66,14	51 713 04	Cable set	1	
66,15	50 900 03	Electric cable AWG 16;L=70MM CSA	1	

Pos. No	Part. No	Denomination	Qty/Version	
			160	172
66,16	51 713 06	Cable set	1	
66	51 712 36	Starter unit Contactor unit 50Hz - 550V Not CSA approved	1	1
66,1	51 716 00	Holder	1	1
66,4	51 511 05	Motor protector SMART	1	1
66,5	410 110	Contactor	1	1
66,6	410 008	Hex.socket hd screw M4X16-A2-70	2	2
66,7	410 012	Lock nut	2	2
66,8	410 008	Hex.socket hd screw M4X16-A2-70	2	2
66,9	410 012	Lock nut	2	2
66,12	51 713 02	Cable set	1	1
66,14	51 713 04	Cable set	1	1
66,16	51 713 06	Cable set	1	1
66,17	50 900 62	Single-core cable	1	1
66,18	50 509 00	Cable set	1	1
66	51 712 40	Starter unit Contactor unit 50Hz 525V - 550V Float switch with isolated input	1	1
66,1	51 716 00	Holder	1	1
66,4	51 511 05	Motor protector SMART	1	1
66,5	410 902	Contactor	1	1
66,6	410 008	Hex.socket hd screw M4X16-A2-70	2	2
66,7	410 012	Lock nut	2	2
66,8	410 008	Hex.socket hd screw M4X16-A2-70	2	2
66,9	410 012	Lock nut	2	2
66,14	51 713 04	Cable set	1	1
66,16	51 713 06	Cable set	1	1
66,17	50 900 62	Single-core cable	1	1
66,18	50 509 00	Cable set	1	1
66,20	51 779 00	Supervision relay	1	1
66,21	50 457 00	Cable tie	1	1
66	51 712 02	Starter unit Capacitor unit 50Hz 220V - 240V 1-phase Not CSA approved	1	
66,1	51 716 00	Holder	1	
66,2	410 089	Capacitor 100MF 360/450 V	1	
66,3	410 376	Capacitor 20MF 400V	1	
66,4	50 906 02	Start relay SNT	1	

Pos. No	Part. No	Denomination	Qty/Version	
			160	172
66,6	410 008	Hex.socket hd screw M4X16-A2-70	2	
66,7	410 012	Lock nut	2	
66,10	51 004 00	Cable set	1	
66,11	51 713 01	Cable set	1	
66,12	51 713 02	Cable set	1	
66,19	50 021 36	Lock nut M8-A4-70	2	
66	51 712 02	Starter unit	1	Capacitor unit 60Hz 220V - 240V 1-phase CSA approved
66,1	51 716 00	Holder	1	
66,2	410 089	Capacitor 100MF 360/450 V	1	
66,3	410 376	Capacitor 20MF 400V	1	
66,4	50 906 02	Start relay SNT	1	
66,6	410 008	Hex.socket hd screw M4X16-A2-70	2	
66,7	410 012	Lock nut	2	
66,10	51 004 00	Cable set	1	
66,11	51 713 01	Cable set	1	
66,12	51 713 02	Cable set	1	
66,19	50 021 36	Lock nut M8-A4-70	2	
66	51 712 02	Starter unit	1	Capacitor unit 50Hz 220V - 240V 1-phase Float switch Not CSA approved
66,1	51 716 00	Holder	1	
66,2	410 089	Capacitor 100MF 360/450 V	1	
66,3	410 376	Capacitor 20MF 400V	1	
66,4	50 906 02	Start relay SNT	1	
66,6	410 008	Hex.socket hd screw M4X16-A2-70	2	
66,7	410 012	Lock nut	2	
66,10	51 004 00	Cable set	1	
66,11	51 713 01	Cable set	1	
66,12	51 713 02	Cable set	1	
66,19	50 021 36	Lock nut M8-A4-70	2	
66	51 712 02	Starter unit	1	Capacitor unit 60Hz 220V - 240V 1-phase Float switch CSA approved
66,1	51 716 00	Holder	1	
66,2	410 089	Capacitor 100MF 360/450 V	1	
66,3	410 376	Capacitor 20MF 400V	1	
66,4	50 906 02	Start relay SNT	1	

Pos. No	Part. No	Denomination	Qty/Version	
			160	172
66,6	410 008	Hex.socket hd screw M4X16-A2-70	2	
66,7	410 012	Lock nut	2	
66,10	51 004 00	Cable set	1	
66,11	51 713 01	Cable set	1	
66,12	51 713 02	Cable set	1	
66,19	50 021 36	Lock nut M8-A4-70	2	
66	51 712 33	Starter unit		1
		Contactor unit 50Hz 220V - 240V Not CSA approved		
66,1	51 716 00	Holder		1
66,4	51 511 07	Motor protector SMART		1
66,5	410 111	Contactor		1
66,6	410 008	Hex.socket hd screw M4X16-A2-70		2
66,7	410 012	Lock nut		2
66,8	410 008	Hex.socket hd screw M4X16-A2-70		2
66,9	410 012	Lock nut		2
66,12	51 713 02	Cable set		1
66,14	51 713 04	Cable set		1
66,16	51 713 06	Cable set		1
66,17	50 900 62	Single-core cable		1
66,18	50 509 00	Cable set		1
66	51 712 34	Starter unit		1
		Contactor unit 50Hz 380V - 400V Not CSA approved		
66,1	51 716 00	Holder		1
66,4	51 511 05	Motor protector SMART		1
66,5	410 109	Contactor		1
66,6	410 008	Hex.socket hd screw M4X16-A2-70		2
66,7	410 012	Lock nut		2
66,8	410 008	Hex.socket hd screw M4X16-A2-70		2
66,9	410 012	Lock nut		2
66,12	51 713 02	Cable set		1
66,14	51 713 04	Cable set		1
66,16	51 713 06	Cable set		1
66,17	50 900 62	Single-core cable		1
66,18	50 509 00	Cable set		1
66	51 712 35	Starter unit		1
		Contactor unit 50Hz 415V - 440V Not CSA approved		

Pos. No	Part. No	Denomination	Qty/Version	
			160	172
66,1	51 716 00	Holder		1
66,4	51 511 05	Motor protector SMART		1
66,5	410 163	Contactactor		1
66,6	410 008	Hex.socket hd screw M4X16-A2-70		2
66,7	410 012	Lock nut		2
66,8	410 008	Hex.socket hd screw M4X16-A2-70		2
66,9	410 012	Lock nut		2
66,12	51 713 02	Cable set		1
66,14	51 713 04	Cable set		1
66,16	51 713 06	Cable set		1
66,17	50 900 62	Single-core cable		1
66,18	50 509 00	Cable set		1
66	51 712 36	Starter unit	Contactor unit 50Hz 500V Not CSA approved	1
66,1	51 716 00	Holder		1
66,4	51 511 05	Motor protector SMART		1
66,5	410 110	Contactactor		1
66,6	410 008	Hex.socket hd screw M4X16-A2-70		2
66,7	410 012	Lock nut		2
66,8	410 008	Hex.socket hd screw M4X16-A2-70		2
66,9	410 012	Lock nut		2
66,12	51 713 02	Cable set		1
66,14	51 713 04	Cable set		1
66,16	51 713 06	Cable set		1
66,17	50 900 62	Single-core cable		1
66,18	50 509 00	Cable set		1
66	51 712 43	Starter unit	Contactor unit 60Hz 220V - 240V CSA approved	1
66,1	51 716 00	Holder		1
66,4	51 511 08	Motor protector SMART		1
66,5	410 111	Contactactor		1
66,6	410 008	Hex.socket hd screw M4X16-A2-70		2
66,7	410 012	Lock nut		2
66,8	410 008	Hex.socket hd screw M4X16-A2-70		2
66,9	410 012	Lock nut		2

Pos. No	Part. No	Denomination	Qty/Version	
			160	172
66,12	51 713 02	Cable set		1
66,14	51 713 04	Cable set		1
66,16	51 713 06	Cable set		1
66,17	50 900 62	Single-core cable		1
66,18	50 509 00	Cable set		1
66	51 712 44	Starter unit	Contactor unit 60Hz 380V - 400V CSA approved	1
66,1	51 716 00	Holder		1
66,4	51 511 06	Motor protector SMART		1
66,5	410 109	Contactor		1
66,6	410 008	Hex.socket hd screw M4X16-A2-70		2
66,7	410 012	Lock nut		2
66,8	410 008	Hex.socket hd screw M4X16-A2-70		2
66,9	410 012	Lock nut		2
66,12	51 713 02	Cable set		1
66,14	51 713 04	Cable set		1
66,16	51 713 06	Cable set		1
66,17	50 900 62	Single-core cable		1
66,18	50 509 00	Cable set		1
66	51 712 45	Starter unit	Contactor unit 60Hz 440V - 480V CSA approved	1
66,1	51 716 00	Holder		1
66,4	51 511 06	Motor protector SMART		1
66,5	410 163	Contactor		1
66,6	410 008	Hex.socket hd screw M4X16-A2-70		2
66,7	410 012	Lock nut		2
66,8	410 008	Hex.socket hd screw M4X16-A2-70		2
66,9	410 012	Lock nut		2
66,12	51 713 02	Cable set		1
66,14	51 713 04	Cable set		1
66,16	51 713 06	Cable set		1
66,17	50 900 62	Single-core cable		1
66,18	50 509 00	Cable set		1
66	51 712 47	Starter unit	Contactor unit 60Hz 575V - 600V CSA approved	1
66,1	51 716 00	Holder		1
66,4	51 511 06	Motor protector SMART		1

Pos. No	Part. No	Denomination	Qty/Version	
			160	172
	66,5 410 902	Contactator		1
	66,6 410 008	Hex.socket hd screw M4X16-A2-70		2
	66,7 410 012	Lock nut		2
	66,8 410 008	Hex.socket hd screw M4X16-A2-70		2
	66,9 410 012	Lock nut		2
	66,12 51 713 02	Cable set		1
	66,14 51 713 04	Cable set		1
	66,16 51 713 06	Cable set		1
	66,17 50 900 62	Single-core cable		1
	66,18 50 509 00	Cable set		1
66	51 712 33	Starter unit	Contactor unit 50Hz 220V - 240V Float switch Not CSA approved	1
	66,1 51 716 00	Holder		1
	66,4 51 511 07	Motor protector SMART		1
	66,5 410 111	Contactator		1
	66,6 410 008	Hex.socket hd screw M4X16-A2-70		2
	66,7 410 012	Lock nut		2
	66,8 410 008	Hex.socket hd screw M4X16-A2-70		2
	66,9 410 012	Lock nut		2
	66,12 51 713 02	Cable set		1
	66,14 51 713 04	Cable set		1
	66,16 51 713 06	Cable set		1
	66,17 50 900 62	Single-core cable		1
	66,18 50 509 00	Cable set		1
66	51 712 34	Starter unit	Contactor unit 50Hz 380V - 400V Float switch Not CSA approved	1
	66,1 51 716 00	Holder		1
	66,4 51 511 05	Motor protector SMART		1
	66,5 410 109	Contactator		1
	66,6 410 008	Hex.socket hd screw M4X16-A2-70		2
	66,7 410 012	Lock nut		2
	66,8 410 008	Hex.socket hd screw M4X16-A2-70		2
	66,9 410 012	Lock nut		2
	66,12 51 713 02	Cable set		1

Pos. No	Part. No	Denomination	Qty/Version	
			160	172
66,14	51 713 04	Cable set		1
66,16	51 713 06	Cable set		1
66,17	50 900 62	Single-core cable		1
66,18	50 509 00	Cable set		1
66	51 712 43	Starter unit	Contactor unit 60Hz 220V - 240V Float switch CSA approved	1
66,1	51 716 00	Holder		1
66,4	51 511 08	Motor protector SMART		1
66,5	410 111	Contactor		1
66,6	410 008	Hex.socket hd screw M4X16-A2-70		2
66,7	410 012	Lock nut		2
66,8	410 008	Hex.socket hd screw M4X16-A2-70		2
66,9	410 012	Lock nut		2
66,12	51 713 02	Cable set		1
66,14	51 713 04	Cable set		1
66,16	51 713 06	Cable set		1
66,17	50 900 62	Single-core cable		1
66,18	50 509 00	Cable set		1
66	51 712 38	Starter unit	Contactor unit 50Hz 380V - 400V Float switch with isolated input	1
66,1	51 716 00	Holder		1
66,4	51 511 05	Motor protector SMART		1
66,5	410 109	Contactor		1
66,6	410 008	Hex.socket hd screw M4X16-A2-70		2
66,7	410 012	Lock nut		2
66,8	410 008	Hex.socket hd screw M4X16-A2-70		2
66,9	410 012	Lock nut		2
66,14	51 713 04	Cable set		1
66,16	51 713 06	Cable set		1
66,17	50 900 62	Single-core cable		1
66,18	50 509 00	Cable set		1
66,20	51 779 00	Supervision relay		1
66,21	50 457 00	Cable tie		1

Pos. No	Part. No	Denomination	Qty/Version	
			160	172
66	51 712 39	Starter unit	Contactor unit 50Hz 415V - 440V Float switch with isolated input Not CSA approved	1
66,1	51 716 00	Holder		1
66,4	51 511 05	Motor protector SMART		1
66,5	410 163	Contactor		1
66,6	410 008	Hex.socket hd screw M4X16-A2-70		2
66,7	410 012	Lock nut		2
66,8	410 008	Hex.socket hd screw M4X16-A2-70		2
66,9	410 012	Lock nut		2
66,14	51 713 04	Cable set		1
66,16	51 713 06	Cable set		1
66,17	50 900 62	Single-core cable		1
66,18	50 509 00	Cable set		1
66,20	51 779 00	Supervision relay		1
66,21	50 457 00	Cable tie		1
66	51 712 40	Starter unit	Contactor unit 50Hz 500V Float switch with isolated input	1
66,1	51 716 00	Holder		1
66,4	51 511 05	Motor protector SMART		1
66,5	410 902	Contactor		1
66,6	410 008	Hex.socket hd screw M4X16-A2-70		2
66,7	410 012	Lock nut		2
66,8	410 008	Hex.socket hd screw M4X16-A2-70		2
66,9	410 012	Lock nut		2
66,14	51 713 04	Cable set		1
66,16	51 713 06	Cable set		1
66,17	50 900 62	Single-core cable		1
66,18	50 509 00	Cable set		1
66,20	51 779 00	Supervision relay		1
66,21	50 457 00	Cable tie		1
66	51 712 49	Starter unit	Contactor unit 60Hz 440V - 480V Float switch with isolated input CSA approved	1
66,1	51 716 00	Holder		1
66,4	51 511 06	Motor protector SMART		1

Pos. No	Part. No	Denomination	Qty/Version	
			160	172
	66,5 410 163	Contactator		1
	66,6 410 008	Hex.socket hd screw M4X16-A2-70		2
	66,7 410 012	Lock nut		2
	66,8 410 008	Hex.socket hd screw M4X16-A2-70		2
	66,9 410 012	Lock nut		2
	66,14 51 713 04	Cable set		1
	66,16 51 713 06	Cable set		1
	66,17 50 900 62	Single-core cable		1
	66,18 50 509 00	Cable set		1
	66,20 51 779 00	Supervision relay		1
	66,21 50 457 00	Cable tie		1
66	51 712 50	Starter unit	Contactor unit	1
	66,1 51 716 00	Holder		1
	66,4 51 511 06	Motor protector SMART		1
	66,5 410 902	Contactator		1
	66,6 410 008	Hex.socket hd screw M4X16-A2-70		2
	66,7 410 012	Lock nut		2
	66,8 410 008	Hex.socket hd screw M4X16-A2-70		2
	66,9 410 012	Lock nut		2
	66,14 51 713 04	Cable set		1
	66,16 51 713 06	Cable set		1
	66,17 50 900 62	Single-core cable		1
	66,18 50 509 00	Cable set		1
	66,20 51 779 00	Supervision relay		1
	66,21 50 457 00	Cable tie		1
66	51 712 00	Starter unit	Capacitor unit 50Hz 110V - 115V 1-phase Not CSA approved	1
	66,1 51 716 00	Holder		1
	66,2 410 137	Capacitor 320MF 220/275V		1
	66,3 410 138	Capacitor 80 MFD 275V		1
	66,4 50 906 03	Start relay SNT		1
	66,6 410 008	Hex.socket hd screw M4X16-A2-70		2
	66,7 410 012	Lock nut		2
	66,10 51 004 00	Cable set		1
	66,11 51 713 01	Cable set		1

Pos. No	Part. No	Denomination	Qty/Version	
			160	172
66,12	51 713 02	Cable set		1
66,19	50 021 36	Lock nut M8-A4-70		2
66	51 712 01	Starter unit	Capacitor unit 50Hz 220V - 240V 1-phase Not CSA approved	1
66,1	51 716 00	Holder		1
66,2	410 377	Capacitor 80MF 360/450V		1
66,3	410 835	Capacitor		1
66,4	50 906 02	Start relay SNT		1
66,6	410 008	Hex.socket hd screw M4X16-A2-70		2
66,7	410 012	Lock nut		2
66,10	51 004 00	Cable set		1
66,11	51 713 01	Cable set		1
66,12	51 713 02	Cable set		1
66,19	50 021 36	Lock nut M8-A4-70		2
66	51 712 00	Starter unit	Capacitor unit 60Hz - 115V 1-phase CSA approved	1
66,1	51 716 00	Holder		1
66,2	410 137	Capacitor 320MF 220/275V		1
66,3	410 138	Capacitor 80 MFD 275V		1
66,4	50 906 03	Start relay SNT		1
66,6	410 008	Hex.socket hd screw M4X16-A2-70		2
66,7	410 012	Lock nut		2
66,10	51 004 00	Cable set		1
66,11	51 713 01	Cable set		1
66,12	51 713 02	Cable set		1
66,19	50 021 36	Lock nut M8-A4-70		2
66	51 712 01	Starter unit	Capacitor unit 60Hz 220V - 240V 1-phase CSA approved	1
66,1	51 716 00	Holder		1
66,2	410 377	Capacitor 80MF 360/450V		1
66,3	410 835	Capacitor		1
66,4	50 906 02	Start relay SNT		1
66,6	410 008	Hex.socket hd screw M4X16-A2-70		2
66,7	410 012	Lock nut		2
66,10	51 004 00	Cable set		1
66,11	51 713 01	Cable set		1

Pos. No	Part. No	Denomination	Qty/Version	
			160	172
66,12	51 713 02	Cable set		1
66,19	50 021 36	Lock nut M8-A4-70		2
66	51 712 00	Starter unit Capacitor unit 50Hz 110V - 115V 1-phase Float switch Not CSA approved		1
66,1	51 716 00	Holder		1
66,2	410 137	Capacitor 320MF 220/275V		1
66,3	410 138	Capacitor 80 MFD 275V		1
66,4	50 906 03	Start relay SNT		1
66,6	410 008	Hex.socket hd screw M4X16-A2-70		2
66,7	410 012	Lock nut		2
66,10	51 004 00	Cable set		1
66,11	51 713 01	Cable set		1
66,12	51 713 02	Cable set		1
66,19	50 021 36	Lock nut M8-A4-70		2
66	51 712 01	Starter unit Capacitor unit 50Hz 220V - 240V 1-phase Float switch Not CSA approved		1
66,1	51 716 00	Holder		1
66,2	410 377	Capacitor 80MF 360/450V		1
66,3	410 835	Capacitor		1
66,4	50 906 02	Start relay SNT		1
66,6	410 008	Hex.socket hd screw M4X16-A2-70		2
66,7	410 012	Lock nut		2
66,10	51 004 00	Cable set		1
66,11	51 713 01	Cable set		1
66,12	51 713 02	Cable set		1
66,19	50 021 36	Lock nut M8-A4-70		2
66	51 712 00	Starter unit Capacitor unit 60Hz - 115V 1-phase Float switch CSA approved		1
66,1	51 716 00	Holder		1
66,2	410 137	Capacitor 320MF 220/275V		1
66,3	410 138	Capacitor 80 MFD 275V		1
66,4	50 906 03	Start relay SNT		1
66,6	410 008	Hex.socket hd screw M4X16-A2-70		2
66,7	410 012	Lock nut		2
66,10	51 004 00	Cable set		1
66,11	51 713 01	Cable set		1

Pos. No	Part. No	Denomination	Qty/Version	
			160	172
66,12	51 713 02	Cable set		1
66,19	50 021 36	Lock nut M8-A4-70		2
66	51 712 01	Starter unit		1
		Capacitor unit 60Hz 220V - 240V 1-phase Float switch CSA approved		
66,1	51 716 00	Holder		1
66,2	410 377	Capacitor 80MF 360/450V		1
66,3	410 835	Capacitor		1
66,4	50 906 02	Start relay SNT		1
66,6	410 008	Hex.socket hd screw M4X16-A2-70		2
66,7	410 012	Lock nut		2
66,10	51 004 00	Cable set		1
66,11	51 713 01	Cable set		1
66,12	51 713 02	Cable set		1
66,19	50 021 36	Lock nut M8-A4-70		2
67	410 832	O-ring 185X4 NBR	1	1
68	51 671 00	Connection plate	1	1
69	51 725 00	Thermal detector unit	1	1
70	410 008	Hex.socket hd screw M4X16-A2-70	1	1
71	51 686 00	Cover	1	1
71	51 686 01	Cover	1	1
		For float switch		
72	51 722 00	Gasket	1	1
73	140 050	Hex.socket hd screw M8X30-A2-70	2	2
74	51 690 00	Handle	1	1
75	50 771 32	Hex.socket hd screw M8X50-A2-70	2	2
77	50 888 00	Data plate	1	1
		Use 50 907 00 (EU), 50 907 01 (US) as spare part		
78	410 000	Drive screw 4X5-A2/A4	2	2
		Terminal board Max 750V 1-phase CSA approved		
78	410 000	Drive screw 4X5-A2/A4		2
		Contactor unit 50Hz 220V - 240V Float switch Not CSA approved		
78	410 000	Drive screw 4X5-A2/A4		2
		Contactor unit 60Hz 220V - 240V Float switch CSA approved		
79	51 726 03	Level regulator unit EU		1
		Contactor unit 50Hz 220V - 240V Float switch Not CSA approved		
79,1	410 840	Contact pin		1
79,2	410 839	Socket contact		1

Pos. No	Part. No	Denomination	Qty/Version	
			160	172
79,3	410 873	Cable lug UL/CSA 0.5-1.65 MM2		1
79,4	410 842	Insulating sleeve		1
79,5	410 843	Insulating sleeve 1,5 - 2,5 MM2		1
79,6	410 774	Level switch		1
79,7	410 370	Plain washer		1
79,8	51 278 00	Bending protection		1
79,9	410 367	Gland screw		1
79	51 724 05	Level regulator unit US/CDN	Contactor unit 60Hz 220V - 240V Float switch CSA approved	1
79,1	410 840	Contact pin		1
79,2	410 839	Socket contact		1
79,3	410 873	Cable lug UL/CSA 0.5-1.65 MM2		1
79,4	410 842	Insulating sleeve		1
79,5	410 843	Insulating sleeve 1,5 - 2,5 MM2		1
79,6	410 868	Level switch		1
79,7	410 370	Plain washer		1
79,8	51 278 00	Bending protection		1
79,9	410 367	Gland screw		1
79	51 726 04	Level regulator unit EU	Contactor unit 50Hz 525V - 550V Float switch with isolated input	1
79,1	410 840	Contact pin		1
79,2	410 839	Socket contact		1
79,3	410 873	Cable lug UL/CSA 0.5-1.65 MM2		1
79,4	410 842	Insulating sleeve		1
79,5	410 843	Insulating sleeve 1,5 - 2,5 MM2		1
79,6	410 370	Plain washer		1
79,7	50 176 00	Level switch		1
79,8	51 278 00	Bending protection		1
79,9	410 367	Gland screw		1
79	51 726 03	Level regulator unit EU	Capacitor unit 50Hz 220V - 240V 1-phase Float switch Not CSA approved	1
79,1	410 840	Contact pin		1
79,2	410 839	Socket contact		1

Pos. No	Part. No	Denomination	Qty/Version		
			160	172	
79,3	410 873	Cable lug UL/CSA 0.5-1.65 MM2	1	1	
79,4	410 842	Insulating sleeve	1	1	
79,5	410 843	Insulating sleeve 1,5 - 2,5 MM2	1	1	
79,6	410 774	Level switch	1	1	
79,7	410 370	Plain washer	1	1	
79,8	51 278 00	Bending protection	1	1	
79,9	410 367	Gland screw	1	1	
79	51 724 05	Level regulator unit US/CDN	Capacitor unit 60Hz 220V - 240V 1-phase Float switch CSA approved	1	1
79,1	410 840	Contact pin	1	1	
79,2	410 839	Socket contact	1	1	
79,3	410 873	Cable lug UL/CSA 0.5-1.65 MM2	1	1	
79,4	410 842	Insulating sleeve	1	1	
79,5	410 843	Insulating sleeve 1,5 - 2,5 MM2	1	1	
79,6	410 868	Level switch	1	1	
79,7	410 370	Plain washer	1	1	
79,8	51 278 00	Bending protection	1	1	
79,9	410 367	Gland screw	1	1	
79	51 726 04	Level regulator unit EU	Contactor unit 50Hz 380V - 400V Float switch Not CSA approved	1	1
79,1	410 840	Contact pin		1	
79,2	410 839	Socket contact		1	
79,3	410 873	Cable lug UL/CSA 0.5-1.65 MM2		1	
79,4	410 842	Insulating sleeve		1	
79,5	410 843	Insulating sleeve 1,5 - 2,5 MM2		1	
79,6	410 370	Plain washer		1	
79,7	50 176 00	Level switch		1	
79,8	51 278 00	Bending protection		1	
79,9	410 367	Gland screw		1	
79	51 726 04	Level regulator unit EU	Contactor unit 50Hz 380V - 400V Float switch with isolated input	1	1
79,1	410 840	Contact pin		1	
79,2	410 839	Socket contact		1	

Pos. No	Part. No	Denomination	Qty/Version	
			160	172
79,3	410 873	Cable lug UL/CSA 0.5-1.65 MM2		1
79,4	410 842	Insulating sleeve		1
79,5	410 843	Insulating sleeve 1,5 - 2,5 MM2		1
79,6	410 370	Plain washer		1
79,7	50 176 00	Level switch		1
79,8	51 278 00	Bending protection		1
79,9	410 367	Gland screw		1
79	51 726 04	Level regulator unit EU	Contactor unit 50Hz 415V - 440V Float switch with isolated input Not CSA approved	1
79,1	410 840	Contact pin		1
79,2	410 839	Socket contact		1
79,3	410 873	Cable lug UL/CSA 0.5-1.65 MM2		1
79,4	410 842	Insulating sleeve		1
79,5	410 843	Insulating sleeve 1,5 - 2,5 MM2		1
79,6	410 370	Plain washer		1
79,7	50 176 00	Level switch		1
79,8	51 278 00	Bending protection		1
79,9	410 367	Gland screw		1
79	51 726 04	Level regulator unit EU	Contactor unit 50Hz 500V Float switch with isolated input	1
79,1	410 840	Contact pin		1
79,2	410 839	Socket contact		1
79,3	410 873	Cable lug UL/CSA 0.5-1.65 MM2		1
79,4	410 842	Insulating sleeve		1
79,5	410 843	Insulating sleeve 1,5 - 2,5 MM2		1
79,6	410 370	Plain washer		1
79,7	50 176 00	Level switch		1
79,8	51 278 00	Bending protection		1
79,9	410 367	Gland screw		1
79	51 724 05	Level regulator unit US/CDN	Contactor unit 60Hz 440V - 480V Float switch with isolated input CSA approved	1
79,1	410 840	Contact pin		1
79,2	410 839	Socket contact		1

Pos. No	Part. No	Denomination	Qty/Version	
			160	172
	79,3 410 873	Cable lug UL/CSA 0.5-1.65 MM2		1
	79,4 410 842	Insulating sleeve		1
	79,5 410 843	Insulating sleeve 1,5 - 2,5 MM2		1
	79,6 410 868	Level switch		1
	79,7 410 370	Plain washer		1
	79,8 51 278 00	Bending protection		1
	79,9 410 367	Gland screw		1
79	51 724 05	Level regulator unit US/CDN	Contactor unit, floating potential	1
	79,1 410 840	Contact pin		1
	79,2 410 839	Socket contact		1
	79,3 410 873	Cable lug UL/CSA 0.5-1.65 MM2		1
	79,4 410 842	Insulating sleeve		1
	79,5 410 843	Insulating sleeve 1,5 - 2,5 MM2		1
	79,6 410 868	Level switch		1
	79,7 410 370	Plain washer		1
	79,8 51 278 00	Bending protection		1
	79,9 410 367	Gland screw		1
79	51 726 03	Level regulator unit EU	Capacitor unit 50Hz 110V - 115V 1-phase Float switch Not CSA approved	1
	79,1 410 840	Contact pin		1
	79,2 410 839	Socket contact		1
	79,3 410 873	Cable lug UL/CSA 0.5-1.65 MM2		1
	79,4 410 842	Insulating sleeve		1
	79,5 410 843	Insulating sleeve 1,5 - 2,5 MM2		1
	79,6 410 774	Level switch		1
	79,7 410 370	Plain washer		1
	79,8 51 278 00	Bending protection		1
	79,9 410 367	Gland screw		1
79	51 724 05	Level regulator unit US/CDN	Capacitor unit 60Hz - 115V 1-phase Float switch CSA approved	1
	79,1 410 840	Contact pin		1
	79,2 410 839	Socket contact		1
	79,3 410 873	Cable lug UL/CSA 0.5-1.65 MM2		1

Pos. No	Part. No	Denomination	Qty/Version	
			160	172
79,4	410 842	Insulating sleeve		1
79,5	410 843	Insulating sleeve 1,5 - 2,5 MM2		1
79,6	410 868	Level switch		1
79,7	410 370	Plain washer		1
79,8	51 278 00	Bending protection		1
79,9	410 367	Gland screw		1
80	410 077	Cable clamp STAINLESS STEEL, CR	1	1
81	50 848 00	Holder FOR LEVEL REGULATOR	1	1
86	50 020 00	Hex.socket hd screw M6X20-A2-70	2	
87	50 020 00	Hex.socket hd screw M6X20-A2-70	1	1
90	410 037	Plug contact	1	1
90	410 038	Plug contact	1	1
90	410 042	Plug contact	1	1
90	410 035	Plug contact	1	1
90	50 100 00	Plug contact		1
90	410 684	Plug contact		1
90	410 036	Plug contact		1
91	131 040	Motor cable subcab		*
91	410 065	Motor cable subcab		*
92	50 102 00	Phase shifter		1

Pos. No	Part. No	Denomination	Qty/Version		
			160	172	
93	51 735 00	Sticker		1	
94	51 735 01	Sticker		1	
100	410 056	Insulating hose D=14 MM	Power cable SUBCAB 3G1,5 10 - 11mm L= 20m Supply connection: Plug 532.1U	*	*
100	132 354	Insulating hose D=20 MM	Power cable x 1 SUBCAB 14AWG/7 18 - 20mm L= 16m		*
101	50 127 04	Plain washer (10)-22 MM		1	1
102	410 727	Seal sleeve (10)-12 MM	Power cable SUBCAB 3G1,5 10 - 11mm L= 20m Supply connection: Plug 532.1U	1	1
102	410 728	Seal sleeve (12)-14 MM	Power cable x 1 SUBCAB 14AWG/3 13,2 - 14,2mm L= 16m	1	1
102	410 729	Seal sleeve (14)-16 MM	Power cable x 1 SUBCAB 14AWG/4 14,2 - 15,2mm L= 16m	1	1
102	410 730	Seal sleeve (16)-18 MM	Power cable x 1 SUBCAB 12AWG/4 17 - 18mm L= 16m		1
102	410 731	Seal sleeve (18)-20 MM	Power cable x 1 SUBCAB 14AWG/7 18 - 20mm L= 16m		1
103	50 926 00	Cable clip (10)-12 MM	Power cable SUBCAB 3G1,5 10 - 11mm L= 20m Supply connection: Plug 532.1U	1	1
103	50 926 01	Cable clip (12)-14 MM	Power cable x 1 SUBCAB 14AWG/3 13,2 - 14,2mm L= 16m	1	1
103	50 926 02	Cable clip (14)-16 MM	Power cable x 1 SUBCAB 14AWG/4 14,2 - 15,2mm L= 16m	1	1
103	50 926 03	Cable clip (16)-18 MM	Power cable x 1 SUBCAB 12AWG/4 17 - 18mm L= 16m		1
103	50 926 04	Cable clip (18)-20 MM	Power cable x 1 SUBCAB 14AWG/7 18 - 20mm L= 16m		1
104	50 932 00	Entrance flange		1	1
105	131 310	Hex.socket hd screw M6X25-A4-70		2	2
106	410 013	Plain washer 6-A4-170		2	2
107	50 020 00	Hex.socket hd screw M6X20-A2-70		1	1
108	51 714 01	Motor cable unit	Power cable SUBCAB 3G1,5 10 - 11mm L= 20m Supply connection: Plug 532.1U	1	1

Pos. No	Part. No	Denomination	Qty/Version		
			160	172	
108	51 714 02	Motor cable unit	Power cable SUBCAB 3G1,5 10 - 11mm L= 20m	1	1
108	51 714 03	Motor cable unit	Power cable SUBCAB 3G2,5 11 - 12mm L= 20m	1	1
108	51 714 04	Motor cable unit	Power cable x 1 SUBCAB 14AWG/3 13,2 - 14,2mm L= 16m	1	1
108	51 714 07	Motor cable unit	Power cable x 1 SUBCAB 14AWG/4 14,2 - 15,2mm L= 16m	1	1
108	51 714 05	Motor cable unit	Power cable SUBCAB 4G1,5 10,5 - 11,5mm L= 20m		1
108	51 714 10	Motor cable unit	Power cable SUBCAB 4G1,5+2x1,5 16 - 17mm L= 20m		1
108	51 714 06	Motor cable unit	Power cable SUBCAB 4G2,5 12,5 - 13,5mm L= 20m		1
108	51 714 12	Motor cable unit	Power cable x 1 SUBCAB 14AWG/7 18 - 20mm L= 16m		1
108	51 714 08	Motor cable unit	Power cable x 1 SUBCAB 12AWG/4 17 - 18mm L= 16m		1
108	51 714 09	Motor cable unit	Power cable x 1 Screened 3x1,5 13,5 - 14,9mm L= 20m		1
108	51 714 18	Motor cable unit	Power cable x 1 SUBCAB S3x2,5+3x2,5/3+S(4x0,5) 18 - 20mm L= 20m		1
108	51 714 19	Motor cable unit	Power cable x 1 SUBCAB S3x2,5+3x2,5/3+S(4x0,5) 18 - 20mm L= 20m		1
110	410 027	Coupling part	Discharge Connection DN 50 Thread : ISO G2A Outer Quick coupling: Storz aluminium	1	1
110	410 028	Coupling part	Discharge Connection DN 75 Thread : ISO G3A Outer Quick coupling: Storz aluminium	1	1
111	51 149 00	Discharge connection	Discharge Connection DN 50 Hose 2" aluminium	1	1
111	51 149 01	Discharge connection	Discharge Connection DN 50 Thread : ISO G2A Outer aluminium	1	1
111	51 149 02	Discharge connection	Discharge Connection DN 50 Thread : NPT 2-11 1/2 Outer aluminium	1	1
111	51 148 00	Discharge connection	Discharge Connection DN 75 Hose 3" aluminium	1	1

Pos. No	Part. No	Denomination	Qty/Version		
			160	172	
111	51 148 01	Discharge connection	Discharge Connection DN 75 Thread : ISO G3A Outer aluminium	1	1
111	51 148 02	Discharge connection	Discharge Connection DN 75 Thread : NPT 3-8 Outer aluminium	1	1
112	410 014	Plain washer A2-170HV M8		2	2
113	50 021 37	Hexagon nut M8-A4-70		2	2
114	410 015	O-ring 79.2X5.7-NBR		1	1
125	410 765	Anode		5	5
800	51 729 00	O-ring kit	Contains all O-rings with position numbers in the exploded view.	1	1
801	51 736 00	Anode unit		1	1
900	51 732 00	Basic repair kit		1	1
903	51 781 01	low suction kit		1	1



AM - LASER UND BAUGERÄTE HANDELS GMBH

Adresse: Oberes Bahnhof 2
Telefon: (+43 2249) 28 495
e-mail: office@am-laser.at

A-2281 Raasdorf
Fax: (+43 2249) 28 495-20
web: www.am-laser.at / www.allround.cc



Verkauf ● Miete ● Service ● Reparatur